

## A Unique Surgical Case of Giant Invasive Intracystic Carcinoma of the Male Breast Focusing on Cytological Findings

Journal:	<i>SAGE Open Medical Case Reports</i>
Manuscript ID	SOMCR-19-0359.R2
Manuscript Type:	Case Report
Date Submitted by the Author:	10-May-2020
Complete List of Authors:	Shioya, Akihiro; Kanazawa Medical University, Pathology and Laboratory Medicine Kadoguchi, Rie; Kanazawa Medical University, Pathology and Laboratory Medicine Guo, Xin; Kanazawa Medical University, Pathology and Laboratory Medicine Ukihashi, Mayumi; Kanazawa Medical University, Pathology and Laboratory Medicine Noguchi, Miki; Kanazawa Medical University, Pathology and Laboratory Medicine Inokuchi, Masafumi; Kanazawa Ika Daigaku Yamada, Sohsuke; Kanazawa Medical University, Pathology and Laboratory Medicine
Keywords:	Oncology, Pathology, Surgery
Additional Keywords:	Intracystic carcinoma (IC), Male, Breast, Giant, Cytopathology, Invasive
Abstract:	<p>A 60-year-old male presented with a history of a relatively hard and cystic right chest mass that had gradually increased in size, with subsequent skin erosion, exudate and hemorrhage. The cytologic specimens from a cyst fluid contained a large number of sheet-like or papillary clusters of atypical cuboidal to columnar epithelial cells with loss of myoepithelial components, in a severely inflammatory background with scattered siderophages. We first interpreted it as a carcinoma, but could not completely exclude out the possibilities of benign. Tumor extirpation was performed, and a gross examination of the neoplasm revealed a giant, cystic and partly solid papillary-projected tumor lesion, with a gray-whitish cut surface, associated focally with skin invasion, measuring approximately 9 × 7 cm with a 6 × 4 cm solid area in diameter. On a microscopic examination, solid parts of the tumor were predominantly composed of the intracystic proliferation of mildly atypical epithelial cells with absence of two-cell patterns in a papillary or papillotubular growth fashion, only partly involving the dermis to epidermis. Immunohistochemistry showed that the carcinoma cells were specifically positive for estrogen and progesterone receptors, whereas negative for p63, S-100 protein and several neuroendocrine markers. Therefore, we finally made a diagnosis of invasive intracystic carcinoma of the male breast. We should be aware that owing to its characteristic cytological features, cytopathologists might be able to make a correct diagnosis of that, based on multiple and adequate samplings, even though a core biopsy would be the absolute minimum assessment.</p>

1  
2  
3  
4  
5  
6  
7  
8  
9  
10  
11  
12  
13  
14  
15  
16  
17  
18  
19  
20  
21  
22  
23  
24  
25  
26  
27  
28  
29  
30  
31  
32  
33  
34  
35  
36  
37  
38  
39  
40  
41  
42  
43  
44  
45  
46  
47  
48  
49  
50  
51  
52  
53  
54  
55  
56  
57  
58  
59  
60



## Case Report

### **R2: A Unique Surgical Case of Giant Invasive Intracystic Carcinoma**

#### **of the Male Breast**

#### **Focusing on Cytological Findings**

Akihiro Shioya,<sup>1,2,3</sup> Rie Kadoguchi,<sup>3</sup> Xin Guo,<sup>1,2</sup> Mayumi Ukihashi,<sup>3</sup> Miki Noguchi,<sup>4</sup>

Masafumi Inokuchi<sup>4</sup> and Sohsuke Yamada<sup>1,2,3\*</sup>

<sup>1</sup>Department of Pathology and Laboratory Medicine, Kanazawa Medical

University, Ishikawa; <sup>2</sup>Department of Pathology, Kanazawa Medical University

Hospital, Ishikawa; & Departments of Pathology<sup>3</sup> and Breast Surgery<sup>4</sup>, Kanazawa

Medical University Himi Municipal Hospital, Toyama, Japan.

Short running title: Cytological findings of male IC.

Word count: **1,472** words (Abstract 246 words); References: 10; and 1 Figure.

\*Corresponding author: Sohsuke Yamada, M.D., Ph.D., Department of Pathology  
and Laboratory Medicine, Kanazawa Medical University, 1-1 Uchinada,  
Ishikawa, 920-0293, Japan. Tel: 81-76-218-8264; Fax: 81-76-286-1207; and  
E-mail: [sohsuke@kanazawa-med.ac.jp](mailto:sohsuke@kanazawa-med.ac.jp)

For Peer Review

## Abstract

A 60-year-old male presented with a history of a relatively hard and cystic right chest mass that had gradually increased in size, with subsequent skin erosion, exudate and hemorrhage. The cytologic specimens from a cyst fluid contained a large number of sheet-like or papillary clusters of atypical cuboidal to columnar epithelial cells with loss of myoepithelial components, in a severely inflammatory background with scattered siderophages. We first interpreted it as a carcinoma, but could not completely exclude out the possibilities of benign. Tumor extirpation was performed, and a gross examination of the neoplasm revealed a giant, cystic and partly solid papillary-projected tumor lesion, with a gray-whitish cut surface, associated focally with skin invasion, measuring approximately  $9 \times 7$  cm with a  $6 \times 4$  cm solid area in diameter. On a microscopic examination, solid parts of the tumor were predominantly composed of the intracystic proliferation of mildly atypical epithelial cells with absence of two-cell patterns in a papillary or papillotubular growth fashion, only partly involving the

dermis to epidermis. Immunohistochemistry showed that the carcinoma cells were specifically positive for estrogen and progesterone receptors, whereas negative for p63, S-100 protein and several neuroendocrine markers. Therefore, we finally made a diagnosis of invasive intracystic carcinoma of the male breast. We should be aware that owing to its characteristic cytological features, cytopathologists might be able to make a correct diagnosis of that, based on multiple and adequate samplings, even though a core biopsy would be the absolute minimum assessment.

Key words: Intracystic carcinoma (IC); invasive; male; breast; cytopathology.

## Introduction

Intracystic carcinoma (IC) is rare among female breast neoplasms, accounting for less than 1% of all cases [1]. By contrast, although male breast carcinoma is very rare, annually one per 10,000, male IC shows a relatively higher incidence ranging from 2 to 3% of all male breast malignancy [2,3]. It is very interesting that the majority of reported cases of male IC originate from Japan, from 1983, by Noguchi M. *et al.* [4], to 2018, by Kinoshita H. *et al.* [5], and our present brief report. However, its backgrounds remain to be elucidated.

IC of the male breast is considered as the malignant counterpart of benign intracystic papilloma, displaying a two-cell pattern with myoepithelial components [1–3]. It often poses a diagnostic challenge to all clinicians and cytopathologists, since its entity is very difficult to diagnose pre-operatively on small, inadequate samples even from the male breast. Indeed, most of cystic breast tumors usually results in paucicellular cytological specimens with a small number of degenerative and poorly preserved carcinoma cells [6]. Furthermore, although patients with IC tend to show very good prognoses with 100% 10-year survival rate and 77% disease-free survival rate, respectively, overall survival

for male IC seems to be lower than that for female [7–9]. Therefore, an early accurate diagnosis and surgical treatment for the male IC should allow for an improved quality of life and improved survival rates. However, there have not been many reports describing the detailed cytological features of male IC on fine needle aspiration (FNA) specimens.

Our purpose is to report an extremely rare case of male giant invasive IC originated from the right breast focusing on its cytological findings. Male IC potentially renders conclusive diagnosis possible on fully adequate and large FNA cytology specimens, even though a core biopsy would be the absolute minimum assessment.

**Case Presentation**

A 60-year-old male patient with an unremarkable previous medical history, except for one family history of his mother’s breast cancer, incidentally had a chief complaint of a gradual increase in size of a relatively hard and cystic right chest mass with subsequent skin erosion, exudate and hemorrhage (Figure 1A) for 2 years. The chest skin below the right nipple looked markedly swelling,



tense and reddish (Figure 1A). Laboratory data, including blood cell count, blood chemistry and tumor markers, were within normal limits. Chest computed tomography (CT) showed a huge, partly solid and cystic, and relatively well-demarcated tumor mass with upper high-density and bottom low-density area, measuring approximately  $11 \times 8$  cm with a  $7 \times 4$  cm solid part in diameter, arising from the right breast (Figure 1B). Full-body CT revealed no definite evidence of metastases or neoplastic foci in the lymph nodes or other organs. The specimen of the FNA cytology sample from the cyst fluid (Figure 1C) unexpectedly contained a large number of small to large, sheet-like or papillary three-dimensional clusters of viable and atypical cuboidal to columnar epithelial cells with loss of myoepithelial components, in a severely inflammatory background with scattered hemosiderin-pigmented macrophages (i.e., siderophages) on Papanicolaou stain (Figure 1C). Fibrovascular cores of those clusters were not evident, and there was no definite evidence of a necrotic background. Giemsa staining also identified very few microcalcificated materials. We first interpreted this picture as indicating carcinoma, suggestive of IC of the male breast, but could not completely exclude out the possibilities of benign

tumors, including breast intracystic papilloma or skin solid-cystic/nodular hidradenoma. Tumor extirpation was thus performed, and a gross examination of the giant tumor revealed a cystic and partly solid papillary-projected tumor lesion, with a gray-whitish cut surface, associated focally with skin invasion, measuring approximately 9 × 7 cm with a 6 × 4 cm solid area in diameter (Figure 1D). The intracystic component contained a large volume of hemorrhagic and dark fluid. Resection was deemed most likely to be complete by this histopathological examination.

Microscopically, the solid parts of the tumor were predominantly composed of the intracystic proliferation of mildly atypical epithelial cells with absence of two-cell patterns in an exophytic and papillary or papillotubular growth fashion (Figure 1E). On a high-power view, these neoplastic cuboido-columnar cells had small to medium-sized, mildly hyperchromatic and enlarged nuclei, conspicuous nucleoli, and abundant eosinophilic cytoplasm, arranged in microtubular or microcystic structures filled with eosinophilic proteinaceous materials (Figure 1E). Mitotic figures were rarely encountered. Furthermore, these tumor nests only partly invaded the dermis to epidermis

(Figure 1E), indicating that they were malignant carcinomatous foci.

Immunohistochemical findings showed that the carcinoma cells were specifically and diffusely positive for estrogen receptor (ER) (Figure 1F) and progesterone receptor (PgR) (Figure 1F), whereas they were negative for cytokeratin 5/6, S-100 protein, p63, thyroid transcription factor-1, CEA, chromogranin A, synaptophysin and HER2/ErbB2. The Ki67 (MIB-1) labeling index was low, approximately 2%, in those atypical cells of the tumor nests. Periodic acid-Schiff stain was not reactive for the carcinoma cells.

Based on these features, we ultimately made a diagnosis of giant invasive IC arising from the male breast. To date, we have completed approximately one year of routine follow-up since the surgery, and the patient remains well without recurrences or metastases.

## Discussion

Although the overall biological behavior of ICs of the breast is generally good, aggressive surgical treatment is the gold standard for a better prognosis [1–3,6–9]. In fact, overall survival for male IC could be lower than that for female [1–3]. Thus, it might be critical to establish an accurate pre-operative diagnosis

by FNA cytology, which has commonly shown a good clinical utility for diagnosing any breast tumors. However, the cytological features of male ICs have rarely been described in detail in the published literatures, due to the inadequateness and/or the rarity of this lesions [1–3,6]. To the best of our knowledge, this is the first case report of male giant invasive IC, with a focus on its cytomorphologic findings. In that sense, the present brief case report potentially interests the scientific community, even though there might not be many specific descriptions about the current case. Nevertheless, since any male patients showing a hard breast mass with skin erosion, including our case, would have a presumptive diagnosis of malignancy, such lesions need to be completely excised for treatment and diagnosis.

The cytological features of breast ICs can more or less reflect the histopathological ones, however, the false-negative rates for ICs reportedly have been relatively high, between 20 to 40% [6]. Moreover, those might be typically diverse often lacking obviously malignant characteristics [6]. FNA of ICs could cytologically show small to sometimes large, three dimensional papillary clusters or single columnar cells occasionally with the fibrovascular

cores [6]. These tumor clusters and/or columnar cells display the presence or absence of apparent nuclear hyperchromatism and pleomorphism, prominent nucleoli or mitotic figures, often without any evidence of necrotic foci [6]. In this context, intracystic papilloma must be included in the differential diagnoses of IC, however, its cytologic features are considered to reveal a two-cell pattern with apparent presence of myoepithelial components [6]. Furthermore, skin solid-cystic/nodular hidradenoma is another important differential diagnosis, but its cytology findings seem to show bimodal population of cuboidal epithelial cells having relatively abundant light-green cytoplasm, and a small number of small myoepithelial-like cells, forming sheet-like and modestly 'three dimensional' clusters [10]. As in the present case, since the specimens were fully adequate, the cytologic features were very similar to those of IC, as described above, even though single columnar cells or fibrovascular cores were very rarely encountered. Thus, a conclusive and accurate diagnosis of male IC, after distinguishing from intracystic papilloma and skin solid-cystic/nodular hidradenoma, based on cytology alone, should be possible to achieve. Nevertheless, in any cases with a strong clinical suspicion of malignant male breast tumors, multiple rounds of

ultrasound-guided (if possible) FNA cytology should be performed and that suspicion should be raised to alert the cytopathologists, at the very least. Finally, the findings of the current immunohistochemical analyses can suggest that immunostaining for specific myoepithelial markers, such as cytokeratin 5/6, S-100 protein and p63, and specific hormone receptor markers, such as ER and PgR, on cytological smears or cell block preparations might be useful for the differential diagnosis with intracystic papilloma or skin solid-cystic/nodular hidradenoma.

**Conclusion**

We encountered a very important case of male giant invasive IC arising from the right breast, tentatively diagnosed as a carcinoma, suggestive of male IC, on the examination of adequate FNA samples cytology. All cytopathologists should be aware that not only the clinicopathologically characteristic features, but also multiple, adequate FNA specimens, might be able to lead to a correct and conclusive diagnosis, even though a core biopsy would be the absolute minimum assessment. Further cytomoprphological studies with the collection and examination of a larger number of IC cases will be required to determine

whether or not cytology specimens alone can distinguish IC from other important benign breast and skin tumors.

### **Declarations**

### **Ethics approval**

Our institution does not require ethical approval for reporting individual cases or case series.

### **Informed Consent**

Written informed consent was obtained from the patient for their anonymized information to be published in this article.

### **Availability of data and materials**

The dataset supporting the findings and conclusions of this case report is included within the article.

**Competing Interests**

The authors declare no conflicts of interest in association with this study.

**Funding**

None.

**Acknowledgments**

We would like to Mrs. Yuka Hiramatsu and Mrs. Chikako Yonenaga for their expert technical assistance.



## References

1. Solorzano CC, Middleton LP, Hunt KK, Mirza N, Meric F, Kuerer HM, Ross MI, Ames FC, Feig BW, Pollock RE, Singletary SE, Babiera G. **Treatment and outcome of patients with intracystic papillary carcinoma of the breast.** *Am J Surg* 2002, **184**: 364–368.
2. Anderson WF, Devesa SS. **In situ male breast carcinoma in the Surveillance, Epidemiology, and End Results database of the National Cancer Institute.** *Cancer* 2005, **104**: 1733–1741.
3. Giordano SH, Cohen DS, Buzdar AU, Perkins G, Hortobagyi GN. **Breast carcinoma in men: a population-based study.** *Cancer* 2004, **101**: 51–57.
4. Noguchi M, Miwa K, Miyazaki I. **Intracystic carcinoma of the breast in an elderly man.** *Jpn J Surg* 1983, **13**: 519–523.
5. Kinoshita H, Kashiwagi S, Teraoka H, Mori T, Kuroda K, Nanbara M, Noda E, Chikugo T, Hirakawa K, Ohira M. **Intracystic papillary carcinoma of the male breast: a case report.** *World J Surg Oncol* 2018, **16**: 15.
6. Levine PH, Waisman J, Yang GC. **Aspiration cytology of cystic carcinoma of**

the breast. *Diagn Cytopathol* 2003, **28**: 39–44.

7. Lefkowitz M, Lefkowitz W, Wargotz ES. Intraductal (intracystic) papillary carcinoma of the breast and its variants: a clinicopathological study of 77 cases. *Hum Pathol*, 1994, **25**: 802–809.

8. Muallaoglu S, Ozdemir E, Kutluay L. Intracystic papillary carcinoma of the breast in a male patient: a case report. *Case Rep Med*, 2012, 378157.

9. Hu ZI, Liu C, Fisher PR, Cohen JA. Intracystic Papillary Carcinoma of the Breast in a Male Patient. *Rare Tumors*, 2016, **8**: 6050.

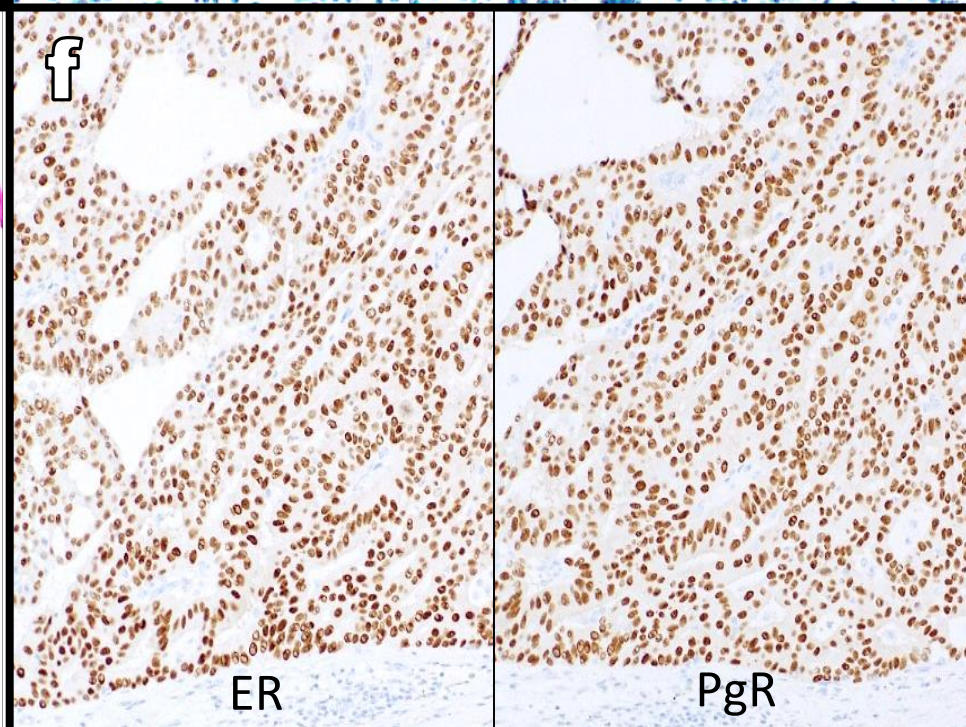
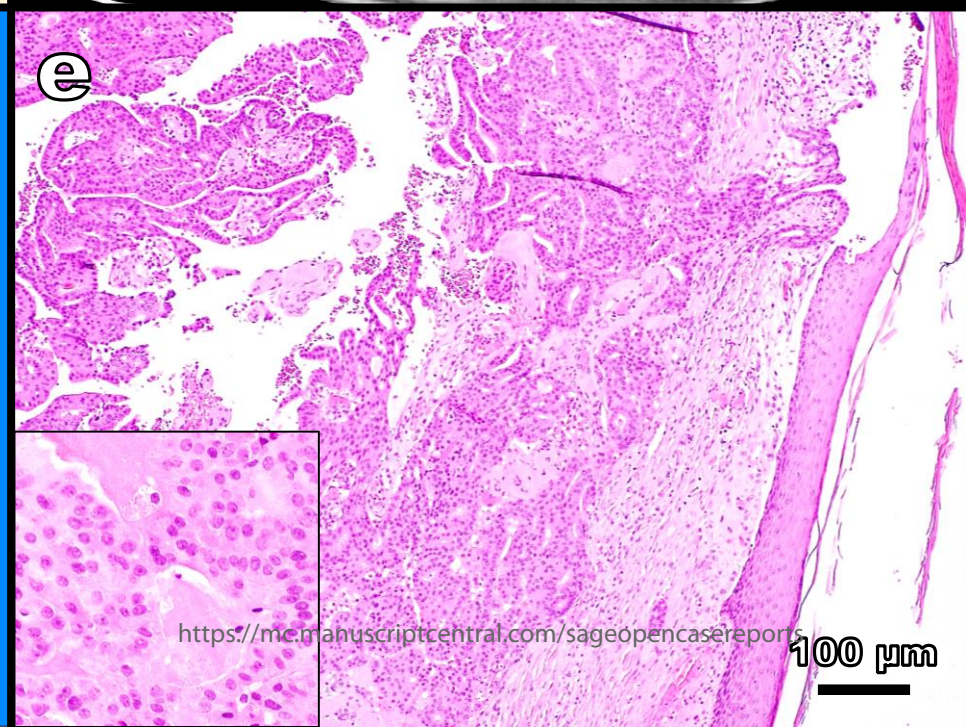
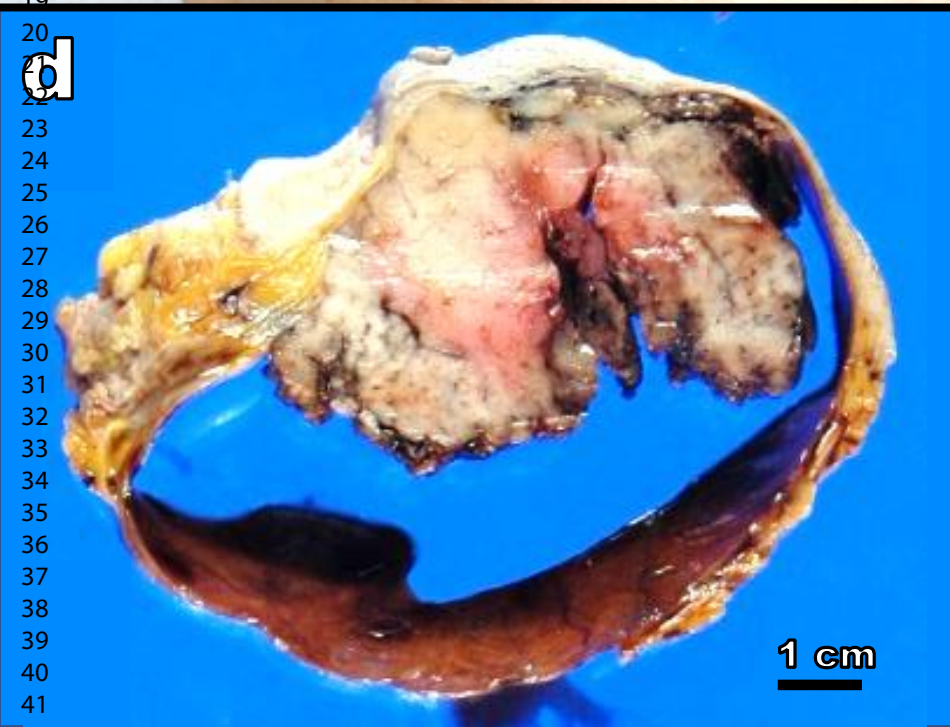
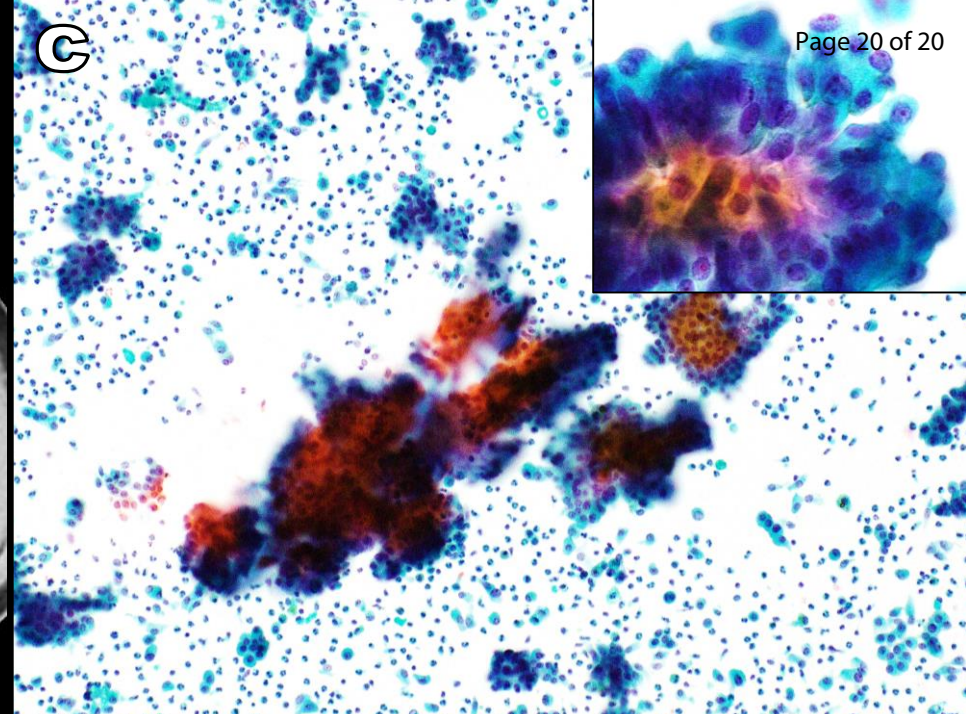
10. Shimizu K, Nishikawa M, Sasaki H, Misaka K, Ueda Y, Fujimori T, Masawa N. Cytologic findings of clear cell hidradenoma in the male breast skin: A case report. *J Jpn Soc Clin Cytol (Japanese)*, 1999, **38**: 342–347.

## Figure Legends

**Figure 1. The findings of gross, chest CT, FNA cytomorphologic and microscopic examinations of the giant male invasive IC specimens. (A)** A 60-year-old male patient incidentally has a chief complaint of a gradual increase in size of a relatively hard and cystic right chest mass with subsequent skin erosion, exudate and hemorrhage for 2 years. The chest skin below the right nipple looks markedly swelling, tense and reddish. **(B)** Chest CT shows a huge, partly solid and cystic, and relatively well-demarcated tumor mass with upper high-density and bottom low-density area, measuring approximately  $11 \times 8$  cm with a  $7 \times 4$  cm solid part in diameter, arising from the right breast. **(C)** The FNA cytology specimen (Papanicolaou staining) contains a large number of small to large, sheet-like or papillary three-dimensional clusters of viable and atypical cuboidal to columnar epithelial cells (inset) with loss of myoepithelial components, in a severely inflammatory background with scattered siderophages. Original magnification:  $200\times$  (inset,  $400\times$ ). **(D)** A gross examination from the surgical specimen shows a cystic and partly solid

1  
2  
3  
4 papillary-projected tumor lesion, with a gray-whitish cut surface, associated  
5  
6  
7 focally with skin invasion, measuring approximately  $9 \times 7$  cm with a  $6 \times 4$  cm  
8  
9  
10 solid area in diameter. Bar = 1 cm. **(E)** Microscopically, the solid parts of this  
11  
12  
13  
14 tumor are predominantly composed of the intracystic proliferation of mildly  
15  
16  
17 atypical epithelial cells with absence of two-cell patterns in an exophytic and  
18  
19  
20 papillary or papillotubular growth fashion. These neoplastic cuboido-columnar  
21  
22  
23  
24 cells have small to medium-sized, mildly hyperchromatic and enlarged nuclei,  
25  
26  
27 conspicuous nucleoli, and abundant eosinophilic cytoplasm, arranged in  
28  
29  
30 microtubular or microcystic structures filled with eosinophilic proteinaceous  
31  
32  
33  
34 materials (inset). Furthermore, these tumor nests only partly invade the dermis  
35  
36  
37 to epidermis (upper right). Bar = 100  $\mu$ m. **(F)** Immunohistochemical findings  
38  
39  
40 show that those carcinoma cells are specifically and diffusely positive for estrogen  
41  
42  
43  
44 receptor (ER) (left) and progesterone receptor (PgR) or p63 (lt.) and cytokeratins,  
45  
46  
47 including AE1/AE3 (rt.). Original magnification: 200 $\times$ .  
48  
49  
50  
51  
52  
53  
54  
55  
56  
57  
58  
59  
60







1  
2  
3  
4  
5  
6  
7  
8  
9  
10  
11  
12  
13  
14  
15  
16  
17  
18  
19  
20  
21  
22  
23  
24  
25  
26  
27  
28  
29  
30  
31  
32  
33  
34  
35  
36  
37  
38  
39  
40  
41  
42  
43  
44  
45  
46  
47  
48  
49  
50  
51  
52  
53  
54  
55  
56  
57  
58  
59  
60

**(1) Ethics approval**

Our institution does not require ethical approval for reporting individual cases or case series.

**(2) Informed consent**

Written informed consent was obtained from the patient(s) for their anonymized information to be published in this article..

For Peer Review