



Recent papers in CSF Vol. 50, 2025

Cell Structure and Function

Reviews and Mini-reviews

Live imaging of paracrine signaling: Advances in visualization and tracking techniques

Eriko Deguchi¹, Michiyuki Matsuda^{1,2,3}, and Kenta Terai^{1,4*}

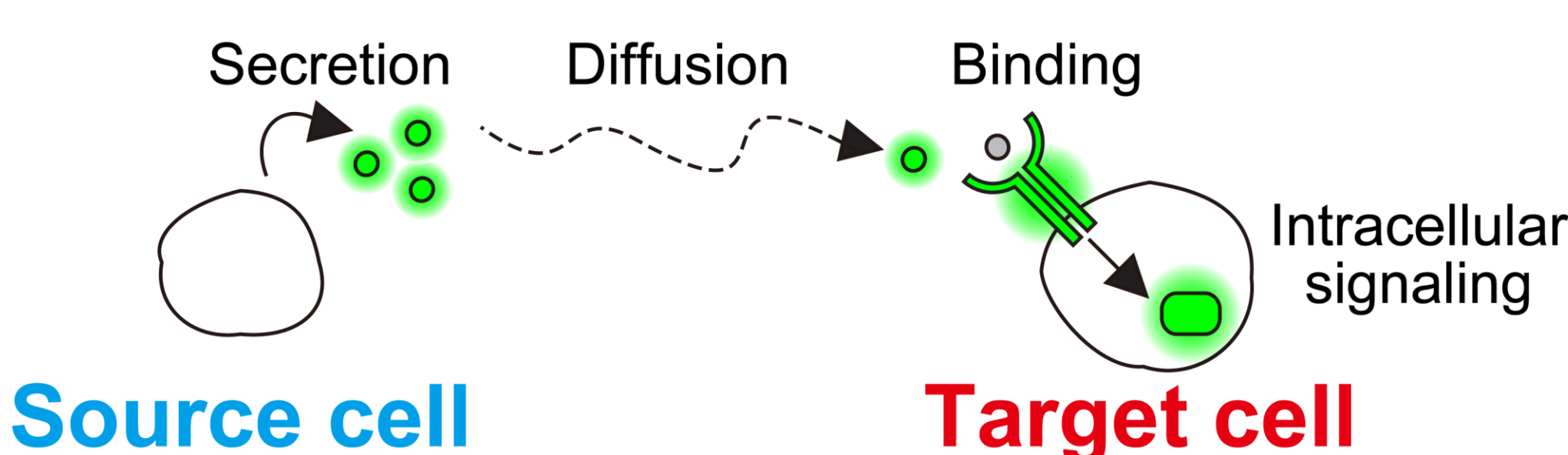
¹ Department of Pathology and Biology of Diseases, Graduate School of Medicine, Kyoto University, Yoshida-Konoe-cho, Sakyo-ku, Kyoto 606-8501, Japan

² Laboratory of Cell Cycle Regulation, Graduate School of Biostudies, Kyoto University, Yoshida-Konoe-cho, Sakyo-ku, Kyoto 606-8501, Japan

³ Integrated Graduate School of Medicine, Engineering, and Agricultural Sciences, University of Yamanashi, Shimokato, Chuo-shi, Yamanashi 409-3898, Japan

⁴ Department of Histology, Graduate School of Medicine, Tokushima University, 3-18-15 Kuramoto-cho, Tokushima 770-8503, Japan

* Correspondence: Kenta Terai, Graduate School of Medicine, Tokushima University, 3-18-15 Kuramoto-cho, Tokushima 770-8503, Japan. Tel: +81-88-633-7049, E-mail: terai.kenta.5m@tokushima-u.ac.jp



Source cell

Target cell



Cell Structure and Function

Research Article

A sensitive ERK fluorescent probe reveals the significance of minimal EGF-induced transcription

Zhang Weisheng^{1,2}, Jun Nakayama², Yukino Inomata², Shigeki Higashiyama^{2,3,4}, and Toru Hiratsuka^{1,2*}

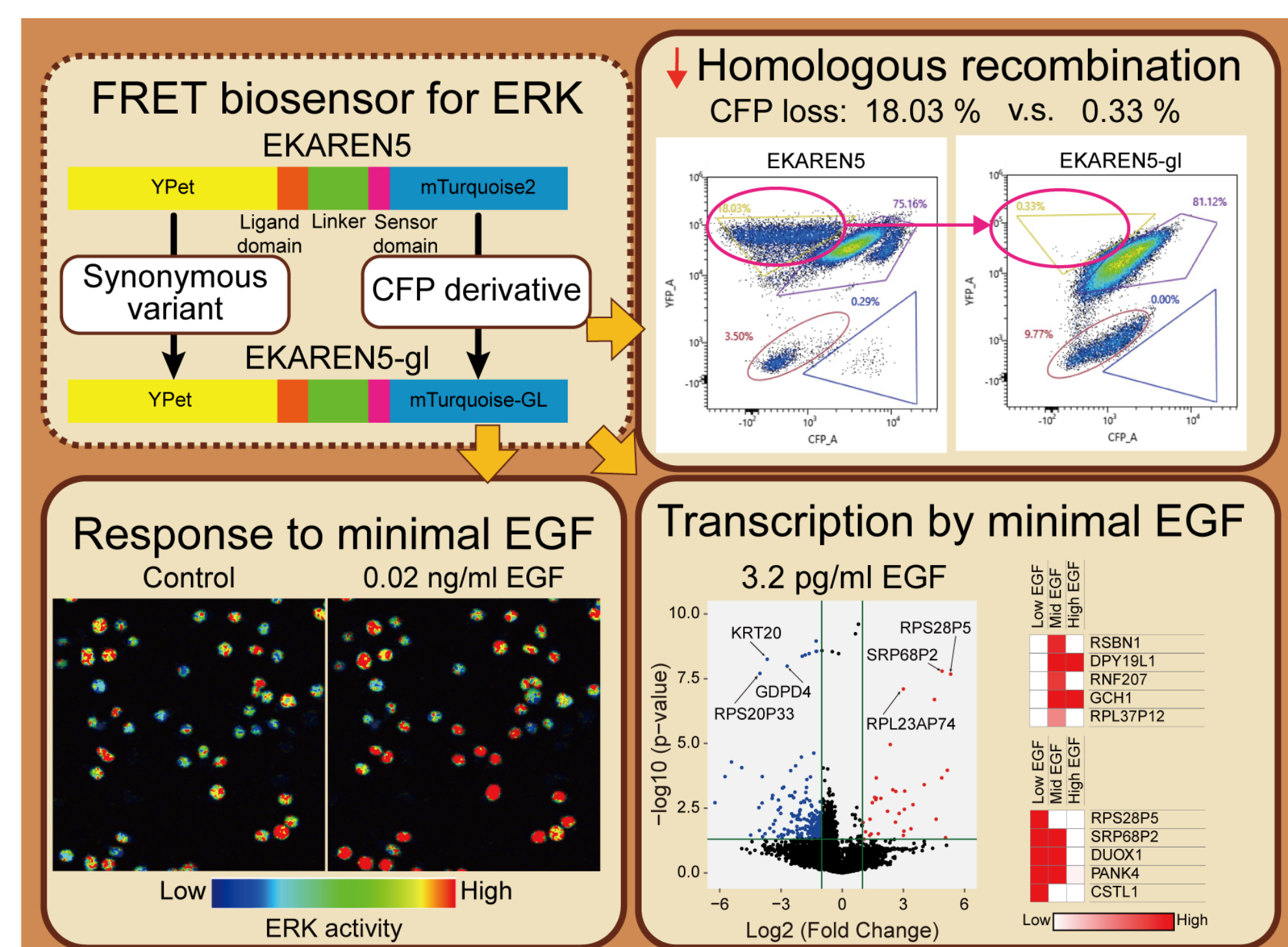
¹ Department of Molecular Oncology, Graduate School of Medicine, Osaka University, Osaka, Japan

² Department of Oncogenesis and Growth Regulation, Research Center, Osaka International Cancer Institute, Osaka, Japan

³ Division of Cell Growth and Tumor Regulation, Proteo-Science Center (PROS), Toon, Ehime, Japan

⁴ Department of Biochemistry and Molecular Genetics, Ehime University Graduate School of Medicine, Toon, Ehime, Japan

* Correspondence: Toru Hiratsuka, Department of Oncogenesis and Growth Regulation, Research Center, Osaka International Cancer Institute, 3-1-69, Otemae, Chuo-ku, Osaka 541-8567, Japan. Fax: +81-6-6945-1231, E-mail: toru.hiratsuka@oici.jp



Cell Structure and Function

Research Article

Magnetic control of membrane damage in early endosomes using internalized magnetic nanoparticles

Yuta Yonekawa^{1#}, Kazuki Oikawa^{1#}, Boldbaatar Bayarkhuu^{1#}, Kizuna Kobayashi¹, Nana Saito¹, Ibuki Oikawa², Ryohei Yamada², Yu-han Chen⁴, Koichi Oyanagi², Yuji Shibasaki³, Satoru Kobayashi², and Yoko Shiba^{1*}

¹ Graduate Course in Biological Sciences, Division of Science and Engineering, Graduate School of Arts and Sciences, Iwate University, Morioka, Japan

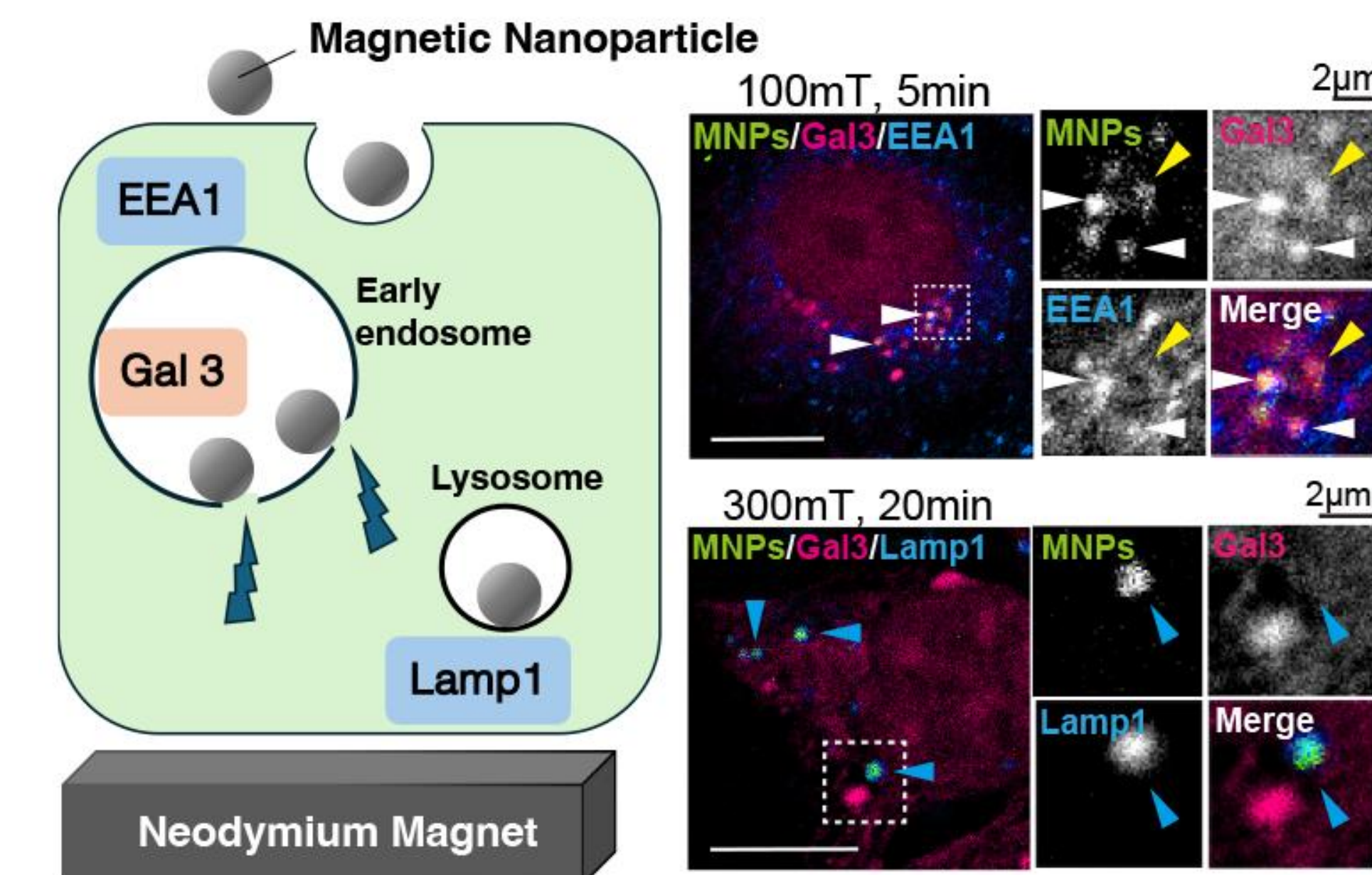
² Graduate Course in Materials Science and Engineering, Division of Science and Engineering, Graduate School of Arts and Sciences, Iwate University, Morioka, Japan

³ Graduate Course in Chemistry, Division of Science and Engineering, Graduate School of Arts and Sciences, Iwate University, Morioka, Japan

⁴ Department of Biochemical Science and Technology, National Chiayi University, Taiwan

* Correspondence: Yoko Shiba, Laboratory of Intracellular Traffic, Graduate Course in Biological Sciences, Division of Science and Engineering, Graduate School of Arts and Sciences, Iwate University, 3-18-33, Ueda, Morioka, Iwate 020-0066, Japan. Tel: +81-19-621-6311, E-mail: shibay@iwate-u.ac.jp

Equally contributed to this work.



Cell Structure and Function

Research Article

Impact of physiological ionic strength and crowding on kinesin-1 motility

Misaki Sagawa¹, Kazuhiro Oiwa^{1,2}, Hiroaki Kojima², Ken'ya Furuta^{2*}, and Keitaro Shibata^{3**}

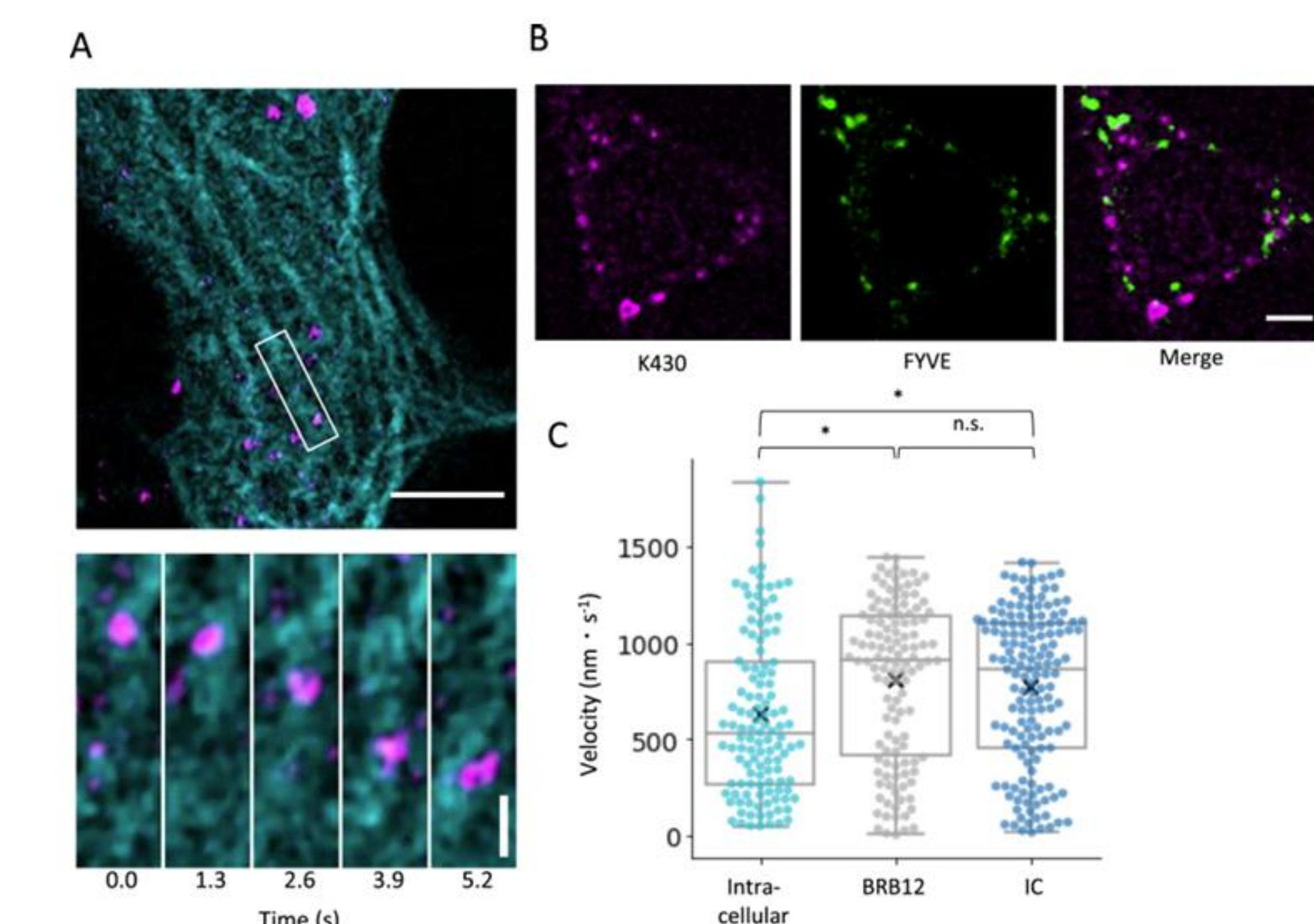
¹ Graduate School of Life Science, University of Hyogo, Harima Science Park City, Hyogo 678-1297, Japan

² Advanced ICT Research Institute, National Institute of Information and Communications Technology, Kobe, Hyogo 651-2492, Japan

³ Department of Cell Biology, Graduate School of Medical Sciences, Tokushima University, Tokushima, Tokushima 770-8503, Japan

* Correspondence: Ken'ya Furuta, Advanced ICT Research Institute, National Institute of Information and Communications Technology, 588-2 Iwaoka, Iwaoka-cho, Nishi-ku, Kobe 651-2492, Japan. Tel: +81-789-69-2214, E-mail: furutak@nict.go.jp

** Correspondence: Keitaro Shibata, Department of Cell Biology, Graduate School of Medical Sciences, Tokushima University, 3-18-15 Kuramoto-cho, Tokushima 770-8503, Japan. Tel: +81-886-33-9258, E-mail: keitaro.shibata@tokushima-u.ac.jp



Cell Structure and Function

Reviews and Mini-reviews

The role of primary cilia in myoblast proliferation and cell cycle regulation during myogenesis

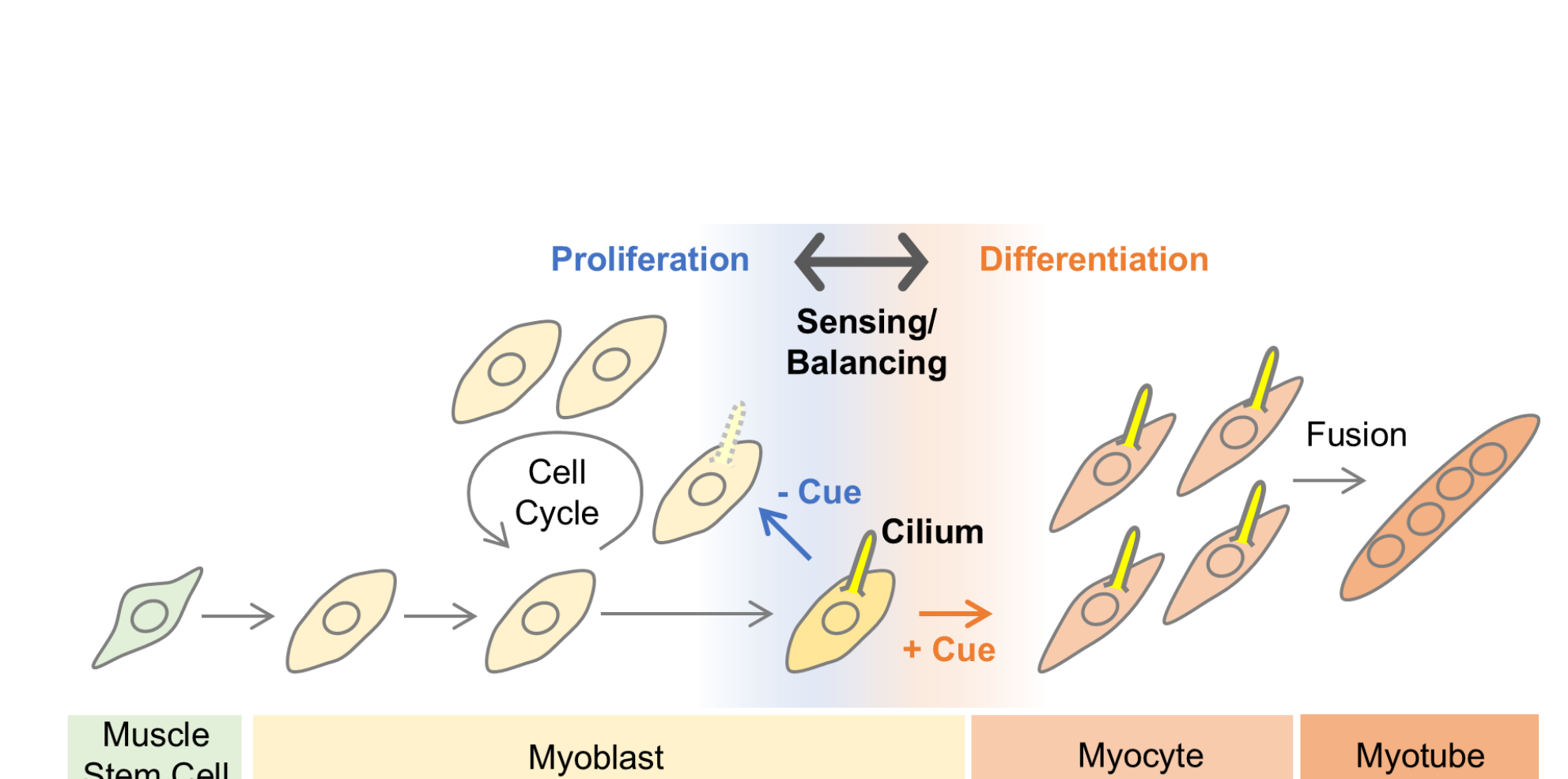
Zhichao Wu^{1#}, Nuo Chen^{1#}, and Daisuke Takao^{1,2*}

¹ College of Animal Sciences and Technology and College of Veterinary Medicine, Huazhong Agricultural University, 1 Shizishan St, Hongshan District, Wuhan, Hubei 430070, China

² Hubei Hongshan Laboratory, 1 Shizishan St, Hongshan District, Wuhan, Hubei 430070, China

* Correspondence: Daisuke Takao, College of Animal Sciences and Technology and College of Veterinary Medicine, Huazhong Agricultural University, 1 Shizishan St, Hongshan District, Wuhan, Hubei 430070, China. Tel: +86-027-87282091, Fax: +86-027-87384670, E-mail: dtakao@mail.hzau.edu.cn

These authors contributed equally to this work.



Cell Structure and Function

Research Article

Tango1L but not Tango1S, Tali and cTAGE5 is required for export of type II collagen in medaka fish

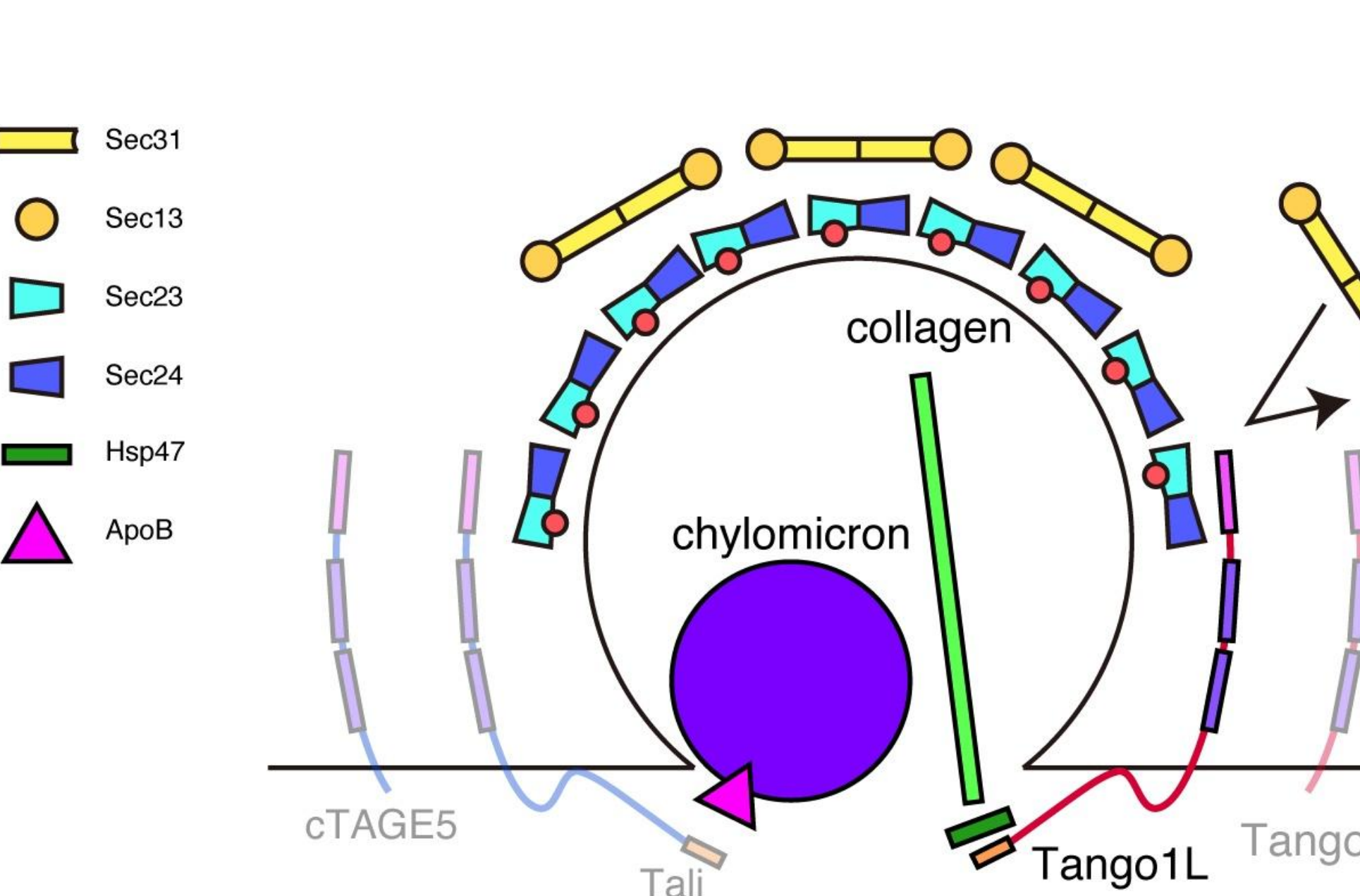
Yusuke Yasuda^{1,2#}, Tomoka Yoshida^{2#}, Mahiro Oue^{2#}, Masaya Sengiku^{2#}, Tokiro Ishikawa², Shunsuke Saito¹, Byungseok Jin¹, and Kazutoshi Mori^{1*}

¹ Kyoto University Institute for Advanced Study, Kyoto 606-8501, Japan

² Department of Biophysics, Graduate School of Science, Kyoto University, Kyoto 606-8502, Japan

* Correspondence: Kazutoshi Mori, Kyoto University Institute for Advanced Study, Yoshida-Ushinomiya, Sakyo-ku, Kyoto 606-8501, Japan. Tel: +81-75-753-4067, Fax: +81-75-753-9759, E-mail: mori.kazutoshi.8r@kyoto-u.ac.jp

These authors equally contributed to this work.



Cell Structure and Function

Reviews and Mini-reviews

Capturing CDKs in action: Live-cell biosensors pioneer the new frontiers in cell cycle research

Sachiya Nakashima^{1,2}, Aika Toyama^{1,2,4,5}, Hironori Sugiyama³, Kazuhiro Aoki^{1,2,4,5,6}, and Yuhei Goto^{1,2*}

¹ Laboratory of Cell Cycle Regulation, Graduate School of Biostudies, Kyoto University, Yoshidakonoe-cho, Sakyo-ku, Kyoto 606-8501, Japan

² Center for Living Systems Information Science, Graduate School of Biostudies, Kyoto University, Yoshidakonoe-cho, Sakyo-ku, Kyoto 606-8501, Japan

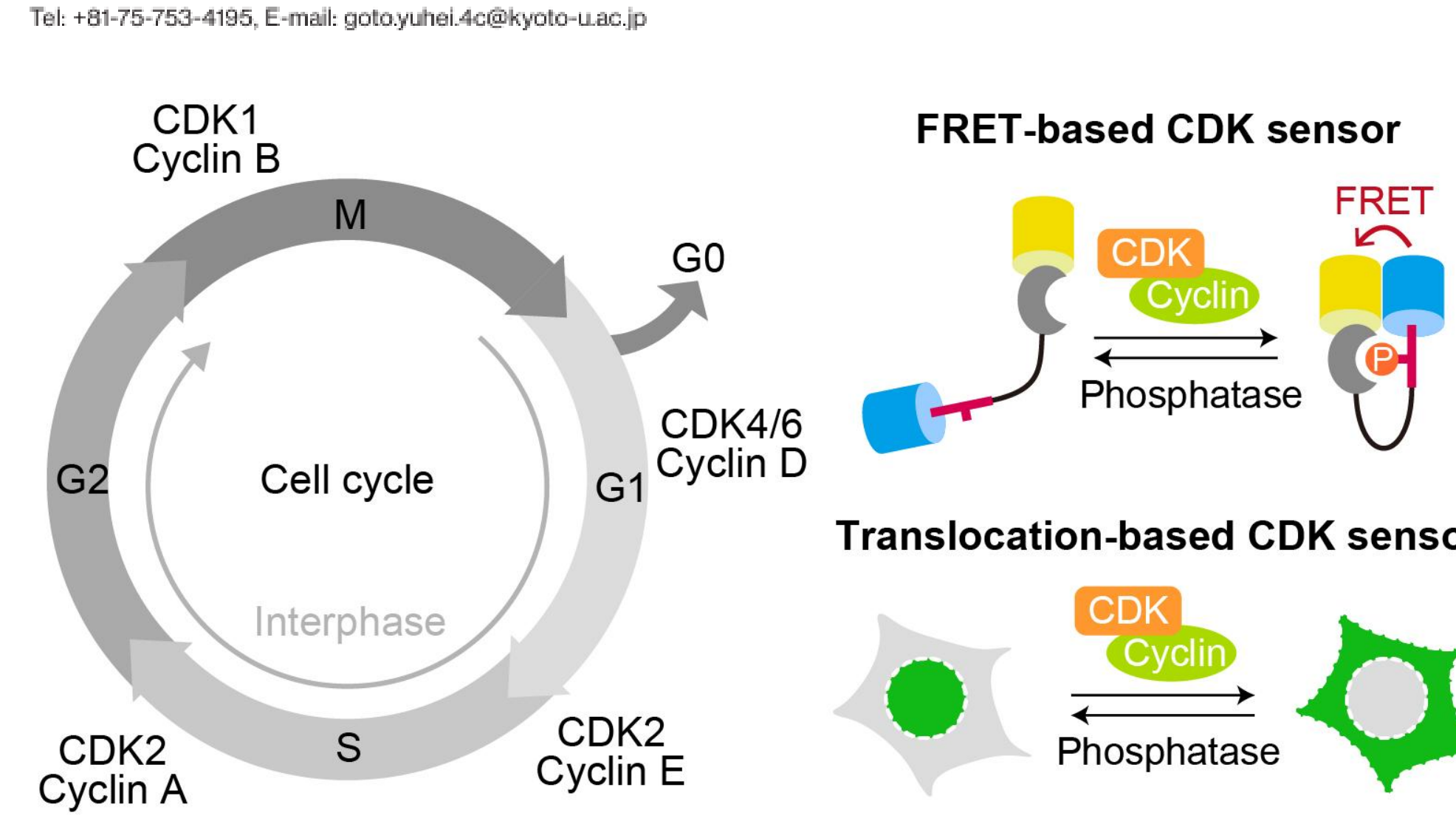
³ Department of Applied Chemistry, Graduate School of Engineering, The University of Tokyo, 7-3-1, Hongo, Bunkyo-ku, Tokyo 113-8656, Japan

⁴ Department of Basic Biology, School of Life Science, SOKENDAI (The Graduate University for Advanced Studies), 5-1, Higashiyama, Myodaiji-cho, Okazaki, Aichi 444-8787, Japan

⁵ Division of Quantitative Biology, National Institute for Basic Biology, National Institutes of Natural Sciences, 5-1, Higashiyama, Myodaiji-cho, Okazaki, Aichi 444-8787, Japan

⁶ Quantitative Biology Research Group, Exploratory Research Center on Life and Living Systems (ExCELLS), National Institutes of Natural Sciences, 5-1, Higashiyama, Myodaiji-cho, Okazaki, Aichi 444-8787, Japan

* Correspondence: Yuhei Goto, Laboratory of Cell Cycle Regulation, Graduate School of Biostudies, Kyoto University, Yoshidakonoe-cho, Sakyo-ku, Kyoto 606-8501, Japan. Tel: +81-75-753-4195, E-mail: goto.yuhei.4c@kyoto-u.ac.jp



Cell Structure and Function

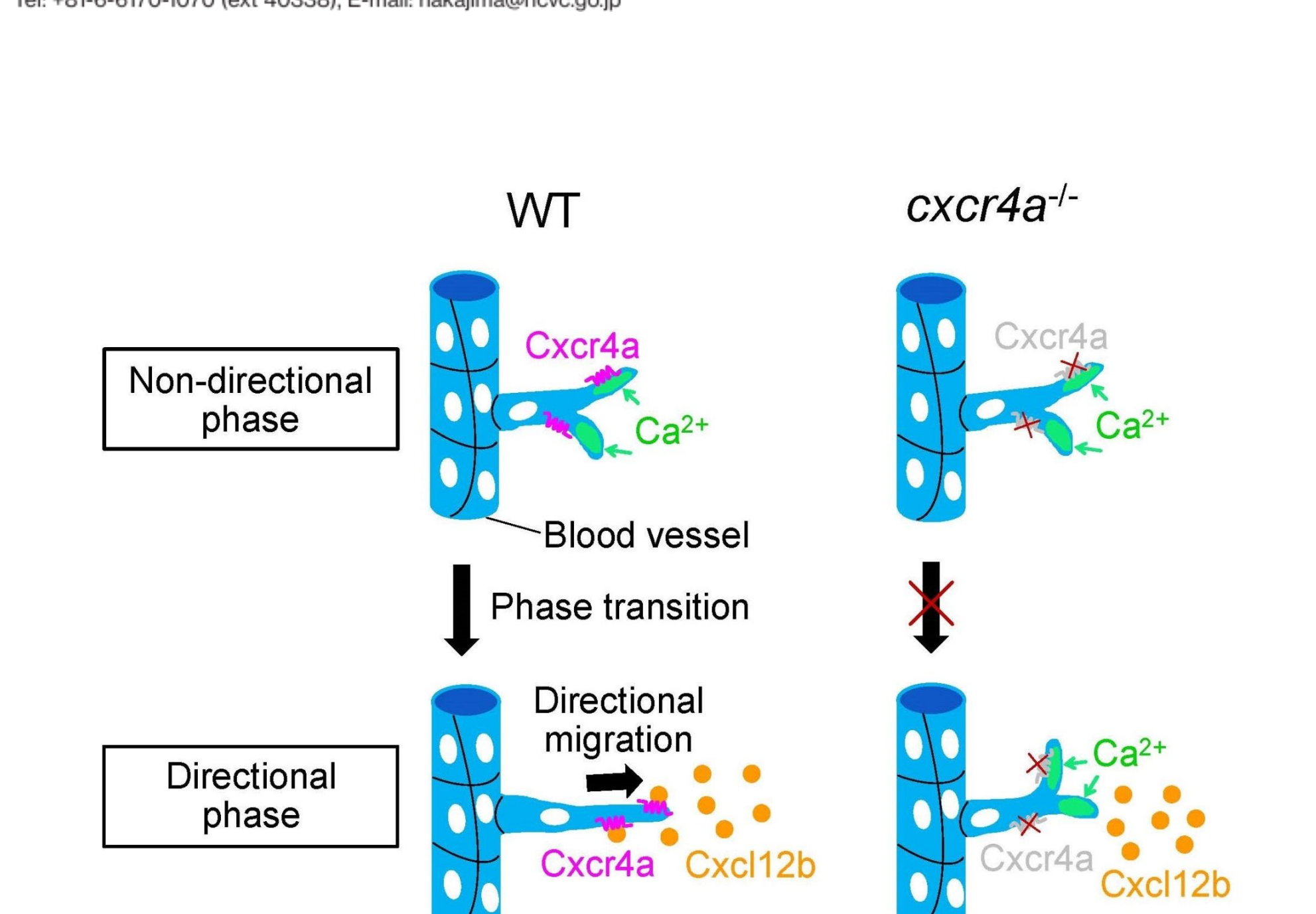
Research Article

Chemokine induces phase transition from non-directional to directional migration during angiogenesis

Ning Gui, Keisuke Sako, Moe Fukumoto, Naoki Mochizuki, and Hiroyuki Nakajima*

Department of Cell Biology, National Cerebral and Cardiovascular Center Research Institute, Suita, Osaka 564-8565, Japan

* Correspondence: Hiroyuki Nakajima, Department of Cell Biology, National Cerebral and Cardiovascular Center Research Institute, Suita, Osaka 564-8565, Japan. Tel: +81-6-6170-1070 (ext 40338), E-mail: nakajima@nccvc.go.jp



Cell Structure and Function

Research Article

Macropinocytosis regulates cytokine expression through Erk signaling in LPS-stimulated macrophages

Li Wang¹, Yanan Li¹, Yuxin He¹, Yuchen Fang¹, Hitomi Mimuro^{2*}, Adam C. Midgley^{1,3**}, and Sei Yoshida^{1,4***}

¹ State Key Laboratory of Medicinal Chemical Biology, College of Life Sciences, Frontiers Science Center for Cell Responses, Nankai University, Tianjin, China

² Division of Genome-Wide Infectious Microbiology, Research Center for GLOBAL and LOCAL Infectious Diseases, Oita University, Oita, Japan

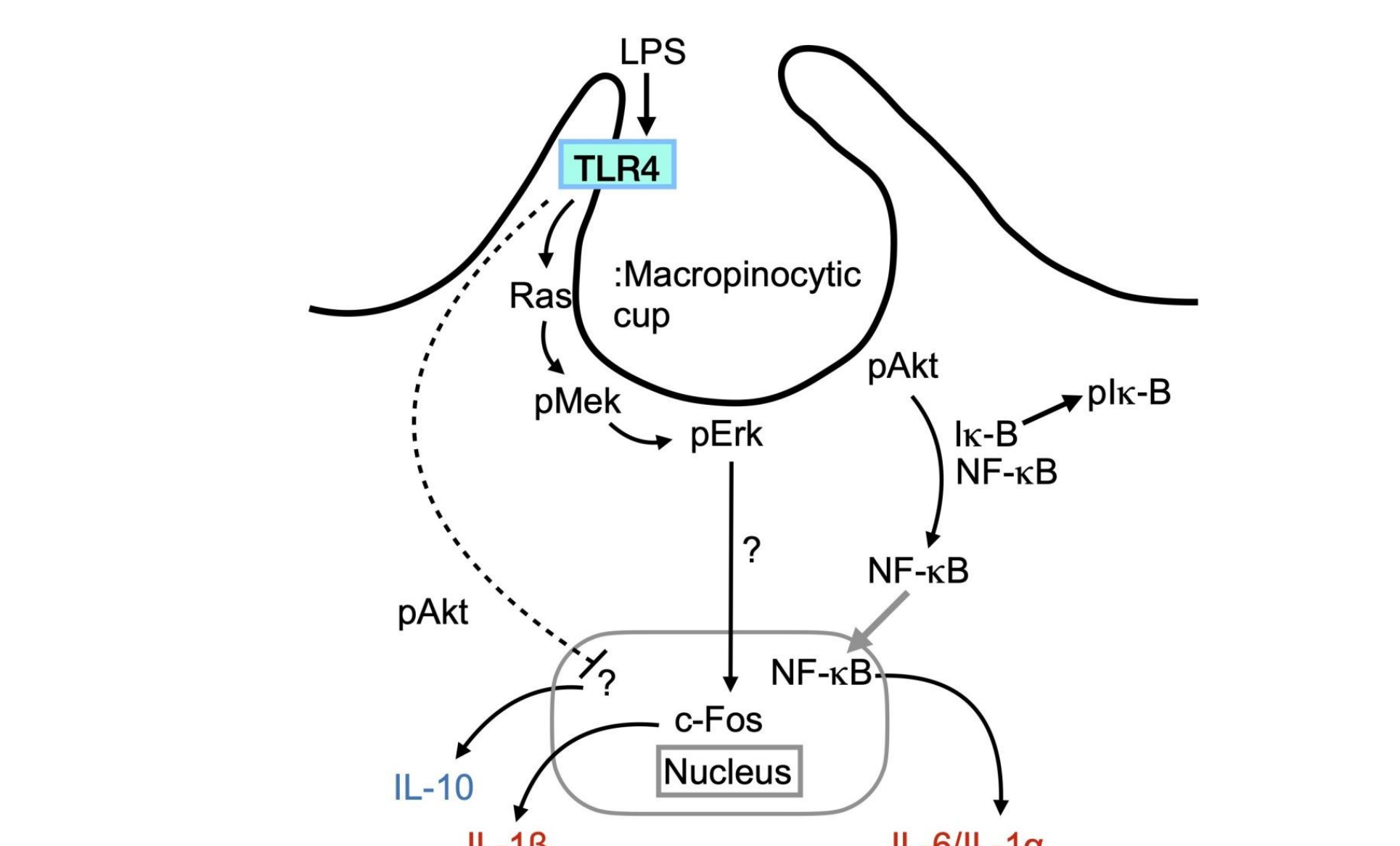
³ Key Laboratory of Bioactive Materials, Ministry of Education, College of Life Sciences, Nankai University, Tianjin, China

⁴ Nankai International Advanced Research Institute, Shenzhen, China

* Correspondence: Hitomi Mimuro, Division of Genome-Wide Infectious Microbiology, Research Center for GLOBAL and LOCAL Infectious Diseases, Oita University, Oita 879-5593, Japan. E-mail: mimuro@oita-u.ac.jp

** Correspondence: Adam C. Midgley, Key Laboratory of Bioactive Materials, Ministry of Education, College of Life Sciences, Nankai University, Tianjin 300071, China. E-mail: midgleyac@nankai.edu.cn

*** Correspondence: Sei Yoshida (lead corresponding author), Nankai University College of Life Sciences, Tianjin 300071, China. E-mail: seiyo@nankai.edu.cn





Recent papers in CSF Vol. 50 2025

Cell Structure and Function



Research Article

A quantitative method to monitor STING degradation with dual-luciferase reporters

Tsumugi Shoji[#], Kanako Sato[#], Ayumi Shinojima, Shogo Koide, Ruri Shindo, Kazune Hongo, Kojiro Mukai, Yoshihiko Kuchitsu^{*}, and Tomohiko Taguchi^{1*}

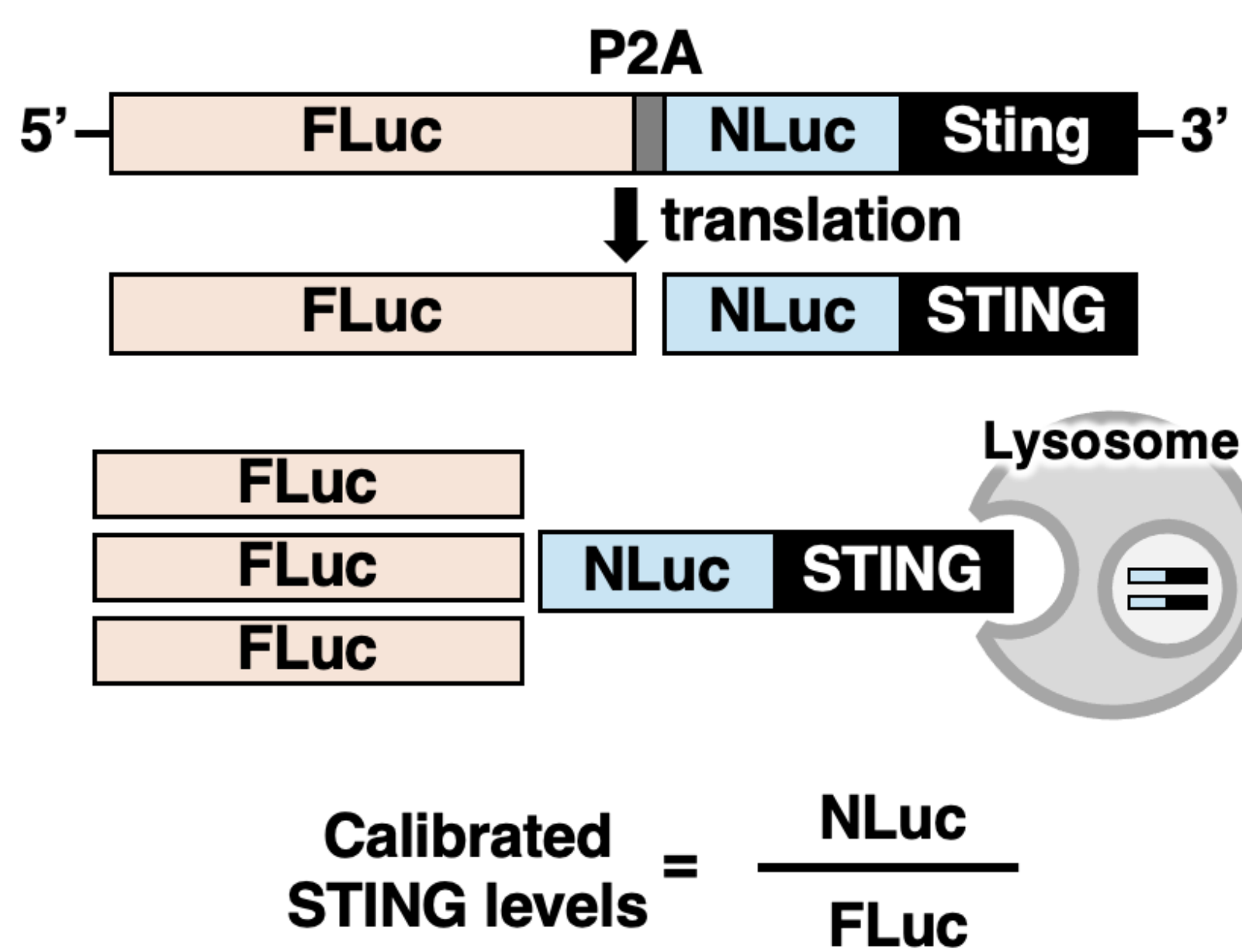
Laboratory of Organelle Pathophysiology, Department of Integrative Life Sciences, Graduate School of Life Sciences, Tohoku University, Sendai, Japan

^{*} Correspondence: Yoshihiko Kuchitsu, Laboratory of Organelle Pathophysiology, Department of Integrative Life Sciences, Graduate School of Life Sciences, Tohoku University, Sendai, Japan. E-mail: yoshihiko.kuchitsu.d8@tohoku.ac.jp

^{**} Correspondence: Tomohiko Taguchi, Laboratory of Organelle Pathophysiology, Department of Integrative Life Sciences, Graduate School of Life Sciences, Tohoku University, Sendai, Japan. E-mail: tomohiko.taguchi.b8@tohoku.ac.jp

[#] These authors contributed equally to the work.

A quantitative method to monitor microautophagic degradation of STING



Cell Structure and Function



Research Article

BiP, GRP94, calreticulin and calnexin contribute to development of the notochord in medaka fish

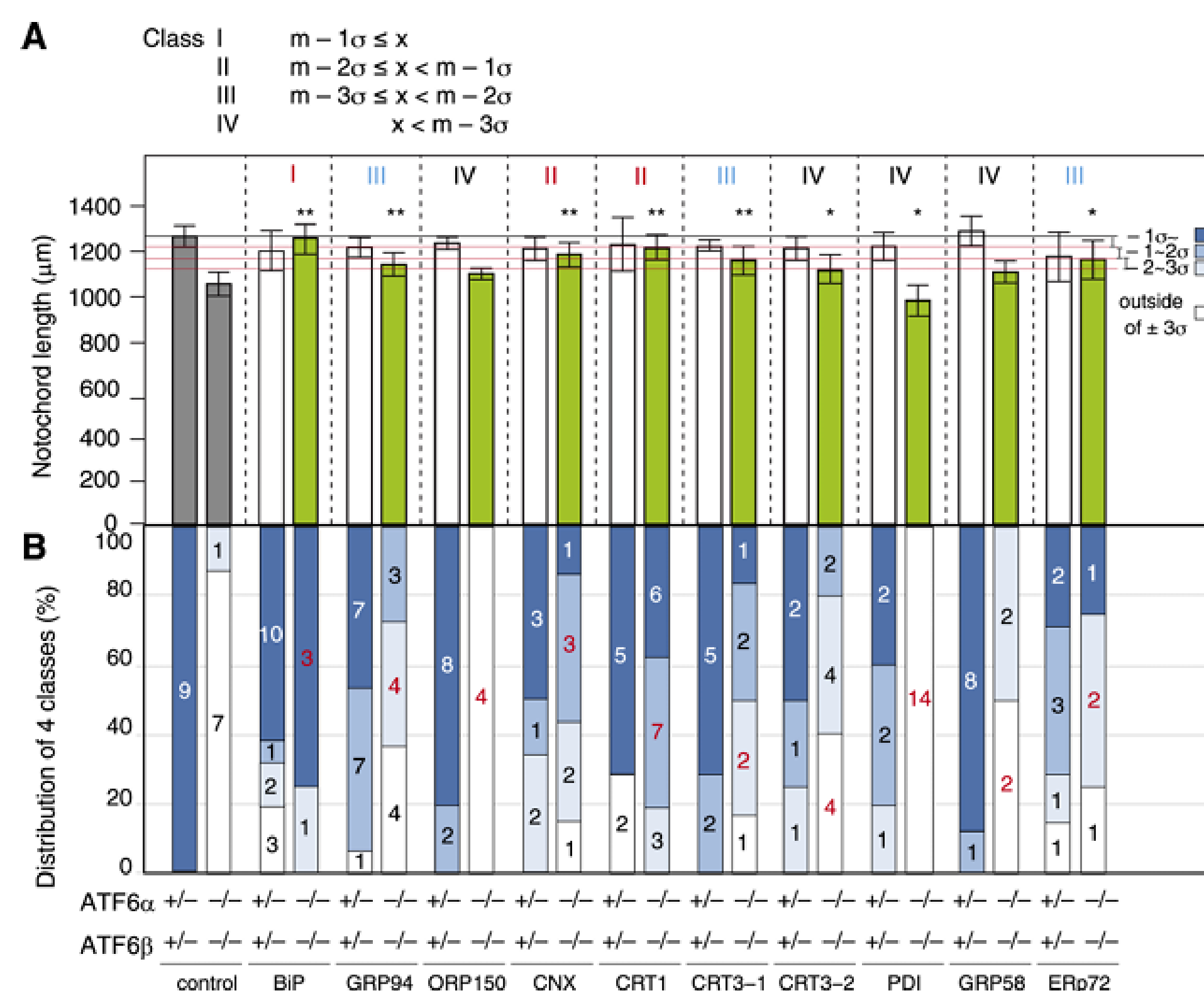
Serina Kita^{1#}, Tokiro Ishikawa^{1#}, and Kazutoshi Mori^{2*}

¹ Department of Biophysics, Graduate School of Science, Kyoto University, Kyoto 606-8502, Japan

² Kyoto University Institute for Advanced Study, Kyoto 606-8501, Japan

^{*} Correspondence: Kazutoshi Mori, Kyoto University Institute for Advanced Study, Yoshida-Ushinomiya, Sakyo-ku, Kyoto 606-8501, Japan. Tel: (81-75)-753-4067, Fax: (81-75)-753-9759, E-mail: mori.kazutoshi.8r@kyoto-u.ac.jp

[#] These authors equally contributed to this work.



Cell Structure and Function



Reviews and Mini-reviews

Cell biological insights into human STING variants

Shogo Koide^{1#}, Eisuke Yumoto^{1#}, Jun Nakayama², Shigeki Higashiyama², Yoshihiko Kuchitsu^{1*}, and Tomohiko Taguchi^{1*}

¹ Laboratory of Organelle Pathophysiology, Department of Integrative Life Sciences, Graduate School of Life Sciences, Tohoku University, Aoba-ku, Sendai, Japan

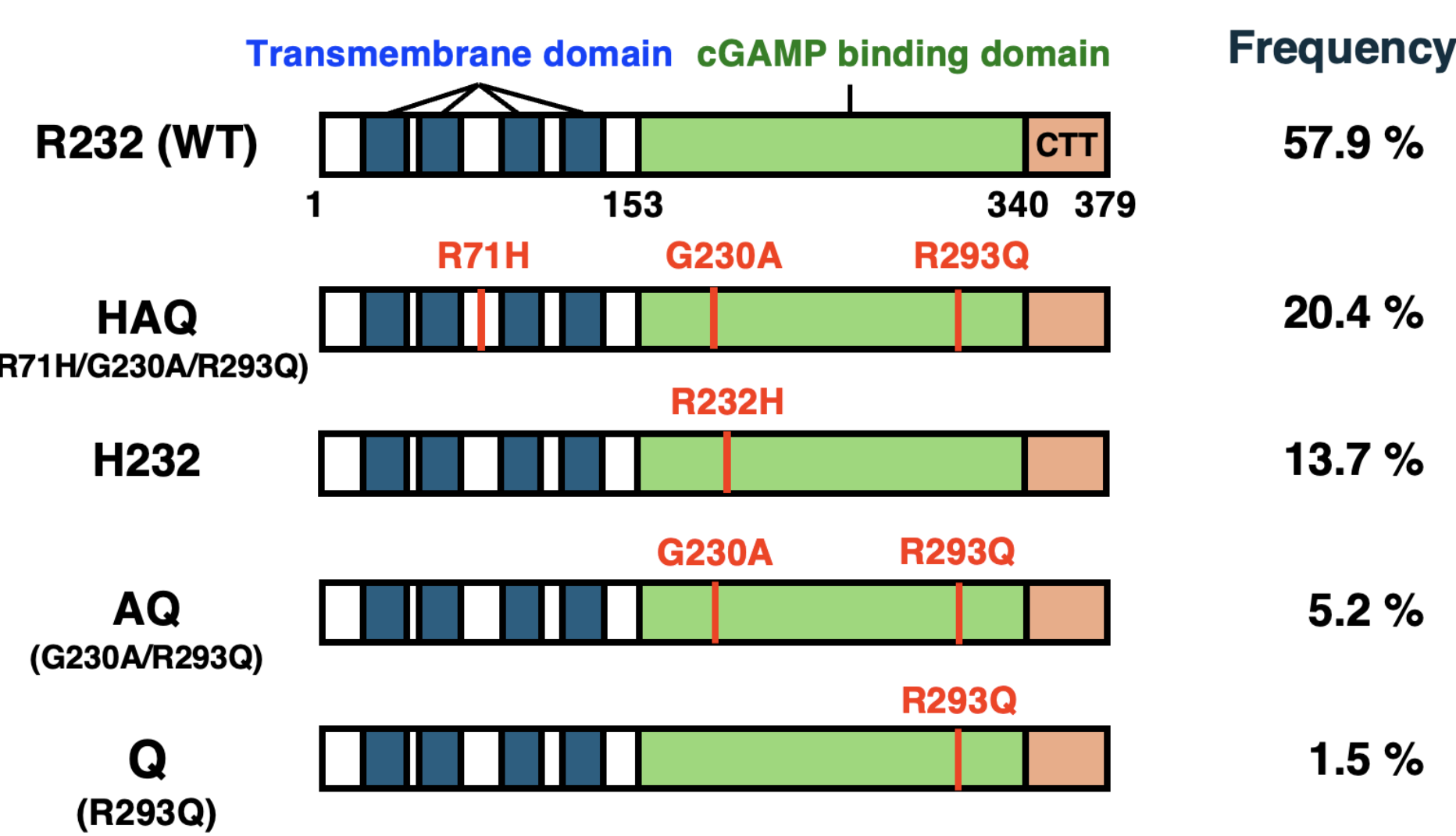
² Department of Oncogenesis and Growth Regulation, Osaka International Cancer Institute, Chuo-ku, Osaka, Japan

^{*} Correspondence: Yoshihiko Kuchitsu, Laboratory of Organelle Pathophysiology, Department of Integrative Life Sciences, Graduate School of Life Sciences, Tohoku University, Aoba-ku, Sendai, Japan. E-mail: yoshihiko.kuchitsu.d8@tohoku.ac.jp

^{**} Correspondence: Tomohiko Taguchi, Laboratory of Organelle Pathophysiology, Department of Integrative Life Sciences, Graduate School of Life Sciences, Tohoku University, Aoba-ku, Sendai, Japan. E-mail: tomohiko.taguchi.b8@tohoku.ac.jp

[#] These authors contributed equally to the work.

STING variants



Cell Structure and Function



Research Article

Opto-p53: A light-controllable activation of p53 signaling pathway

Tatsuki Tsuruoka^{1,2,3,4,5}, Yuhei Goto^{4,5}, and Kazuhiro Aoki^{1,2,3,4,5*}

¹ Division of Quantitative Biology, National Institute for Basic Biology, National Institutes of Natural Sciences, 5-1 Higashiyama, Myodaiji-cho, Okazaki, Aichi 444-8787, Japan

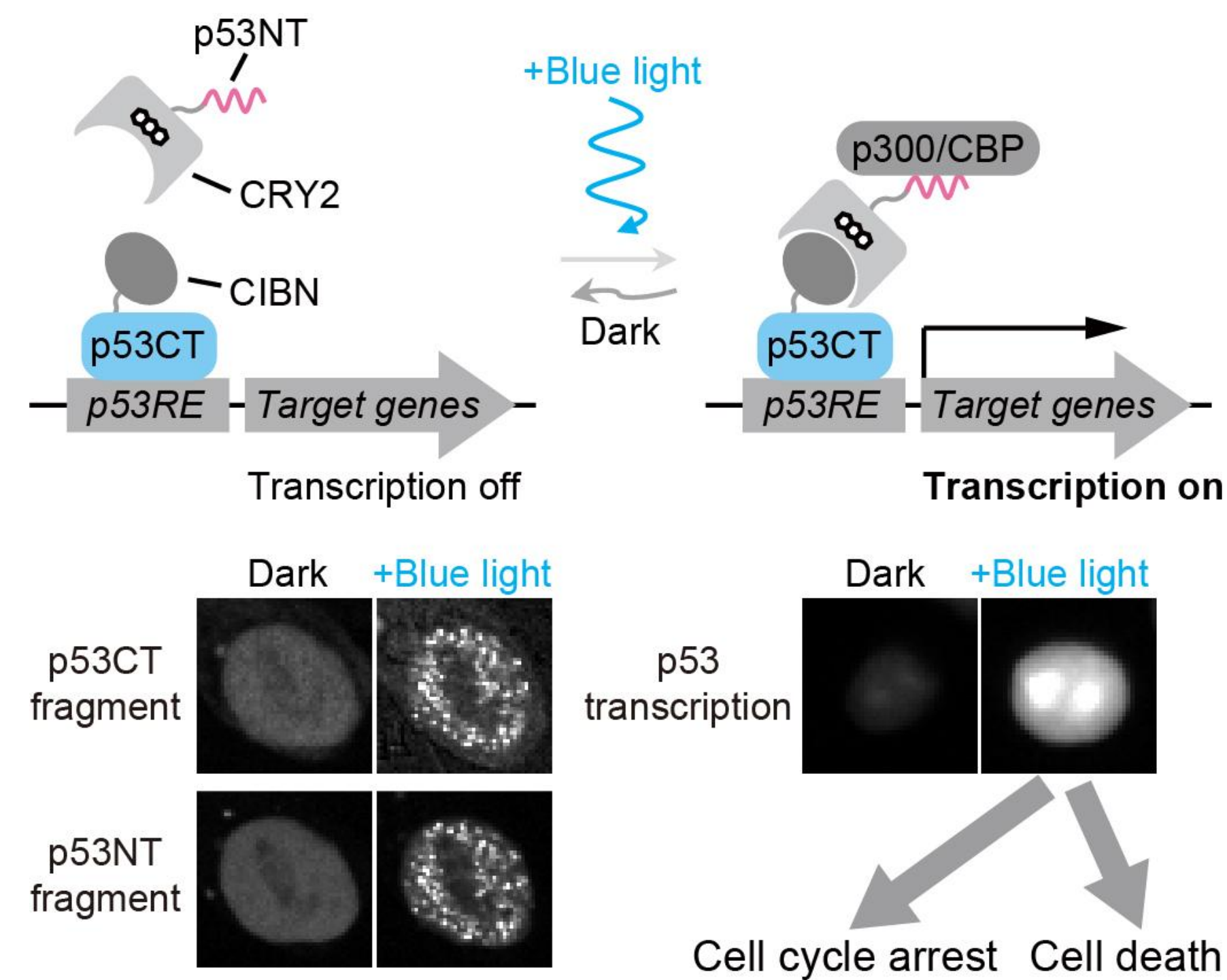
² Quantitative Biology Research Group, Exploratory Research Center on Life and Living Systems (ExCELLS), National Institutes of Natural Sciences, 5-1 Higashiyama, Myodaiji-cho, Okazaki, Aichi 444-8787, Japan

³ Department of Basic Biology, School of Life Science, SOKENDAI (The Graduate University for Advanced Studies), 5-1 Higashiyama, Myodaiji-cho, Okazaki, Aichi 444-8787, Japan

⁴ Laboratory of Cell Cycle Regulation, Graduate School of Biostudies, Kyoto University, Yoshidakonoe-cho, Sakyo-ku, Kyoto, Kyoto 606-8501, Japan

⁵ Center for Living Systems Information Science, Graduate School of Biostudies, Kyoto University, Yoshidakonoe-cho, Sakyo-ku, Kyoto, Kyoto 606-8501, Japan

^{*} Correspondence: Kazuhiro Aoki, Laboratory of Cell Cycle Regulation, Graduate School of Biostudies, Kyoto University, Yoshidakonoe-cho, Sakyo-ku, Kyoto, Kyoto 606-8501, Japan. E-mail: aoki.kazuhiro.6v@kyoto-u.ac.jp



Cell Structure and Function



Research Article

Assembly and mother centriole recruitment of IFT-B subcomplexes to form IFT-B holocomplex

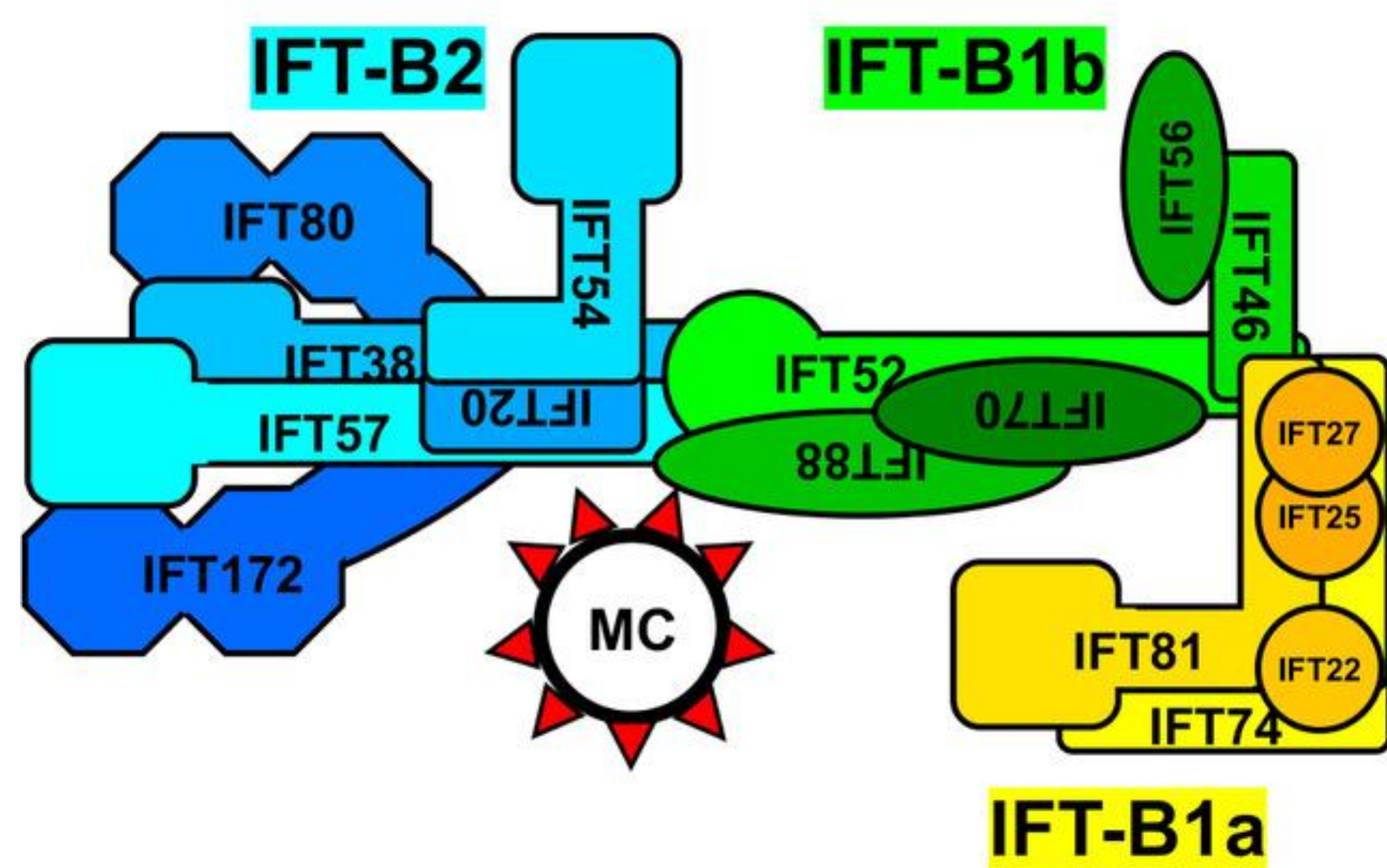
Koshi Tasaki, Yohei Katoh[†], Hye-Won Shin, and Kazuhisa Nakayama^{**}

Department of Physiological Chemistry, Graduate School of Pharmaceutical Sciences, Kyoto University, Sakyo-ku, Kyoto 606-8501, Japan

^{*} Correspondence: Kazuhisa Nakayama, Department of Physiological Chemistry, Graduate School of Pharmaceutical Sciences, Kyoto University, Sakyo-ku, Kyoto 606-8501, Japan. E-mail: kazunaka@pharm.kyoto-u.ac.jp

[†] Present address: Hiroshima University Genome Editing Innovation Center, Higashi-Hiroshima, Hiroshima 739-0046, Japan.

^{**} Present address: Graduate School of Pharmaceutical Sciences, Kumamoto University, Chuo-ku, Kumamoto 862-0973, Japan.



Cell Structure and Function



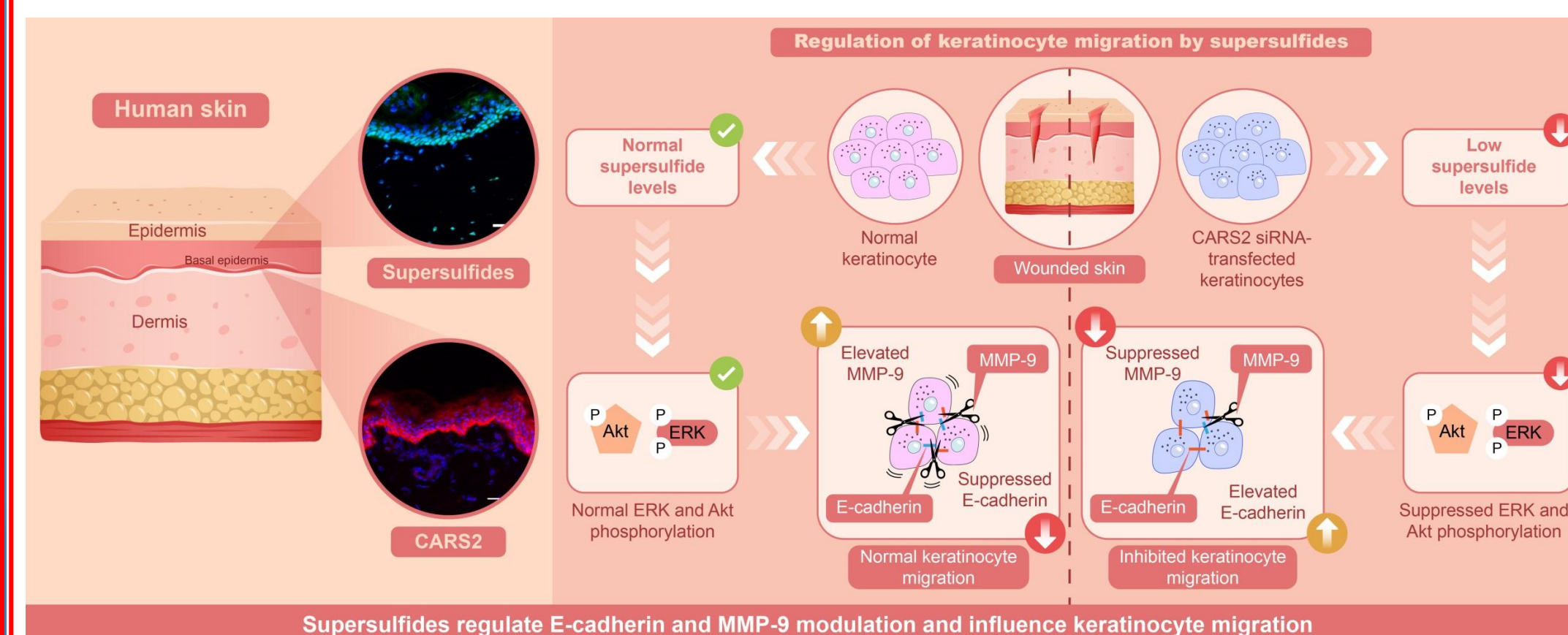
Research Article

Supersulfides regulate cell migration in human skin keratinocytes

Kento Kunihiro and Katsura Sano^{*}

ALBION Co., Ltd., 1-7-10 Ginza, Chuo-ku, Tokyo 104-0061, Japan

^{*} Correspondence: Katsura Sano, ALBION Co., Ltd., 1-7-10 Ginza, Chuo-ku, Tokyo 104-0061, Japan. Tel: +81-3-6375-7903, Fax: +81-3-5820-2132, E-mail: ka_maeda@albion.co.jp



Best papers in CSF 2023 and 2024

Cell Structure and Function



Full Article

Deciphering the sub-Golgi localization of glycosyltransferases via 3D super-resolution imaging

Hirokazu Yagi^{1,2}, Seigo Tateo^{2,3}, Taiki Saito^{2,3}, Yusaku Ohta², Emiko Nishi², Saemi Obitsu², Tatsuya Suzuki^{2,3}, Supaphorn Seetaha^{2,3,4}, Charles Hellec¹, Akihiko Nakano⁵, Takuro Tojima⁵, and Koichi Kato^{1,2,3*}

¹ Graduate School of Pharmaceutical Sciences, Nagoya City University, 3-1 Tanabe-dori, Mizuho-ku, Nagoya 467-8603, Japan

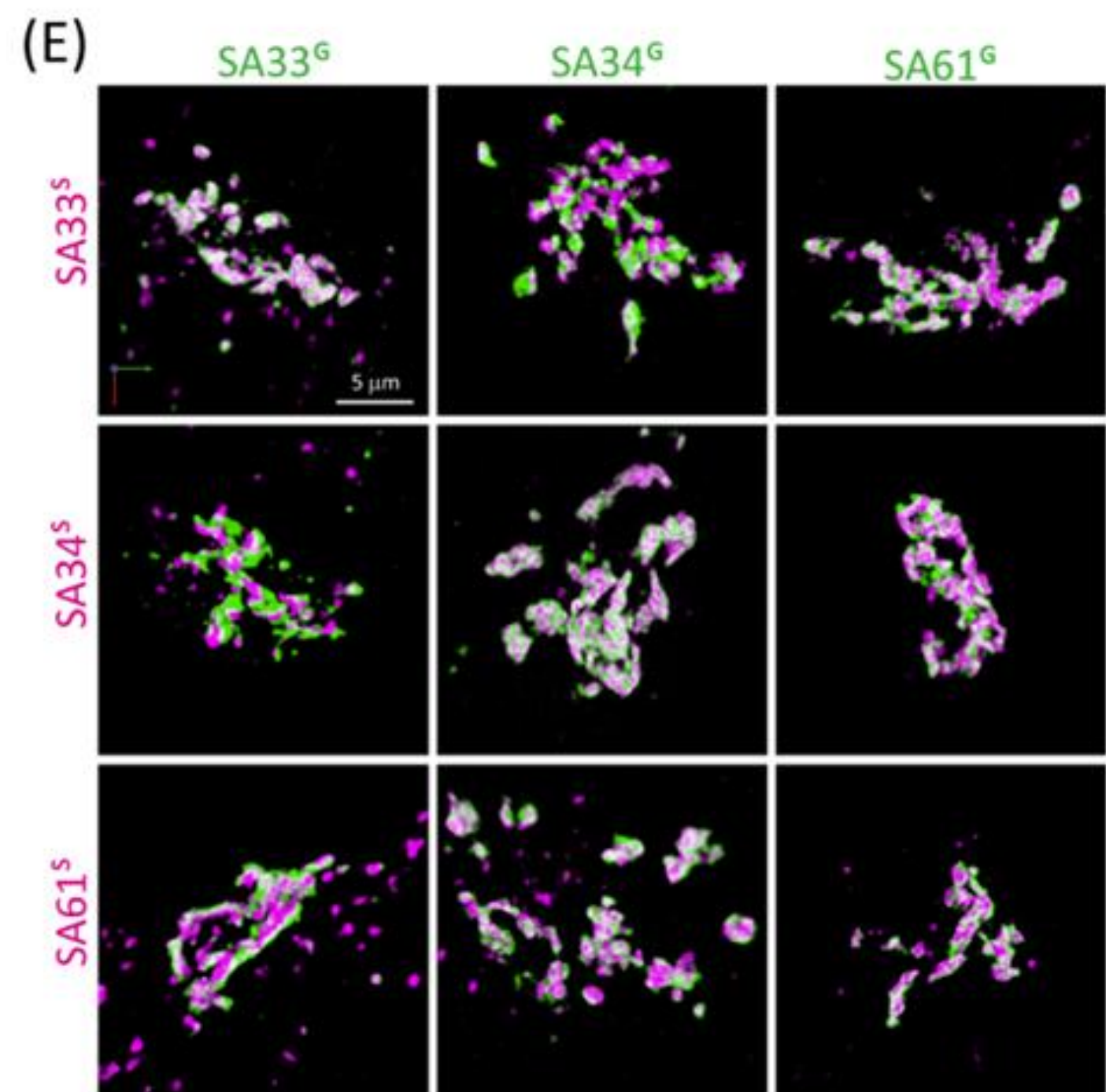
² Exploratory Research Center on Life and Living Systems (ExCELLS), 5-1 Higashiyama, Myodaiji-cho, Okazaki 444-8787, Japan

³ Institute for Molecular Science, National Institutes of Natural Sciences, 5-1 Higashiyama, Myodaiji-cho, Okazaki 444-8787, Japan

⁴ Department of Biochemistry, Faculty of Science, Kasetsart University, Bangkok, 10900, Thailand

⁵ Live Cell Super-Resolution Imaging Research Team, RIKEN Center for Advanced Photonics, 2-1 Hirosawa, Wako 351-0198, Japan

^{*} Correspondence: Koichi Kato, Ph.D., Exploratory Research Center on Life and Living Systems and Institute for Molecular Science, National Institutes of Natural Sciences, 5-1 Higashiyama, Myodaiji-cho, Okazaki 444-8787, Japan. Tel: +81-564-59-5225, Fax: +81-564-59-5224, E-mail: kkatonmr@ims.ac.jp



Cell Structure and Function



Full Article

Possible roles of CAHS proteins from Tardigrade in osmotic stress tolerance in mammalian cells

Takahiro Bino^{1,2}, Yuhei Goto^{3,4}, Gembu Maryu^{1,2}, Kazuharu Arakawa^{2,5,6,7}, and Kazuhiro Aoki^{1,2,3,4,8*}

¹ Division of Quantitative Biology, National Institute for Basic Biology, National Institutes of Natural Sciences, 5-1 Higashiyama, Myodaiji-cho, Okazaki, Aichi 444-8787, Japan

² Quantitative Biology Research Group, Exploratory Research Center on Life and Living Systems (ExCELLS), National Institutes of Natural Sciences, 5-1 Higashiyama, Myodaiji-cho, Okazaki, Aichi 444-8787, Japan

³ Department of Basic Biology, School of Life Science, SOKENDAI (The Graduate University for Advanced Studies), 5-1 Higashiyama, Myodaiji-cho, Okazaki, Aichi 444-8787, Japan

⁴ Laboratory of Cell Cycle Regulation, Graduate School of Biostudies, Kyoto University, Yoshidakonoe-cho, Sakyo-ku, Kyoto, Kyoto 606-8501, Japan

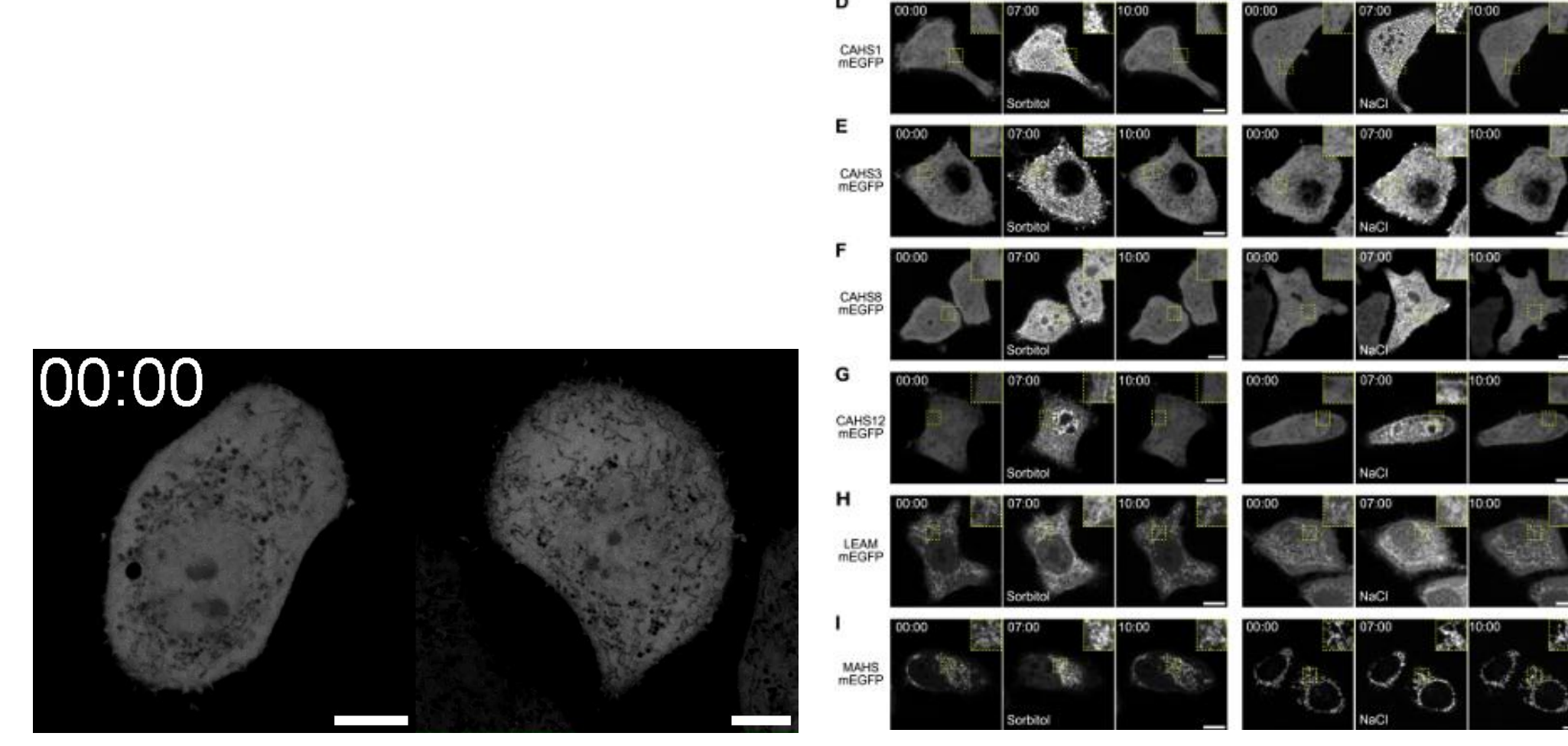
⁵ Institute for Advanced Biosciences, Keio University, Nihonkoku 403-1, Daihoji, Tsuruoka, Yamagata, 997-0017, Japan

⁶ Graduate School of Media and Governance, Keio University, Endo 5322, Fujisawa, Kanagawa 252-0882, Japan

⁷ Faculty of Environment and Information Studies, Keio University, Endo 5322, Fujisawa, Kanagawa 252-0882, Japan

⁸ Center for Living Systems Information Science, Graduate School of Biostudies, Kyoto University, Yoshidakonoe-cho, Sakyo-ku, Kyoto, Kyoto 606-8501, Japan

^{*} Correspondence: Kazuhiro Aoki, Laboratory of Cell Cycle Regulation, Graduate School of Biostudies, Kyoto University, Yoshidakonoe-cho, Sakyo-ku, Kyoto, Kyoto 606-8501, Japan. Tel: +81-75-753-4195, E-mail: aoki.kazuhiro.6v@kyoto-u.ac.jp



Cell Structure and Function



Full Article

A non-nucleotide agonist that binds covalently to cysteine residues of STING

Kentaro Matsumoto¹, Shenwei Ni², Hiroyuki Arai², Takashi Toyama³, Yoshiro Saito³, Takehiro Suzuki⁴, Naoshi Dohmae⁴, Kojiro Mukai^{1*}, and Tomohiko Taguchi^{1*}

¹ Laboratory of Organelle Pathophysiology, Department of Integrative Life Sciences, Graduate School of Life Sciences, Tohoku University, Sendai, Japan

² Department of Health Chemistry, Graduate School of Pharmaceutical Sciences, University of Tokyo, Tokyo, Japan

³ Laboratory of Molecular Biology and Metabolism, Graduate School of Pharmaceutical Sciences, Tohoku University, Sendai, Japan

⁴ Biomolecular Characterization Unit, Technology Platform Division, RIKEN Center for Sustainable Resource Science, Saitama, Japan

^{*} Correspondence: Kojiro Mukai, Laboratory of Organelle Pathophysiology, Department of Integrative Life Sciences, Graduate School of Life Sciences, Tohoku University, Sendai, Japan. Tel: 022-795-6676, E-mail: k_mukai@tohoku.ac.jp

^{**} Correspondence: Tomohiko Taguchi, Laboratory of Organelle Pathophysiology, Department of Integrative Life Sciences, Graduate School of Life Sciences, Tohoku University, Sendai, Japan. Tel: 022-795-6676, E-mail: tom_taguchi@tohoku.ac.jp

